

SARANGSoft



WinBackup Business v2.5

Client Installation Guide

(November, 2015)

WinBackup Business Client is a part of WinBackup Business application. It runs in the background on every client computer that enables a centralized control to manage backup of all computers from a single point.

WinBackup Business Client installer is packaged as part of the WinBackup Business installation CD. When you install WinBackup Business 'Database Configuration' on a computer (from a WinBackup Business installation CD or the downloaded installer MSI), the following steps take place:

- α) A specific shared folder named 'WinBackupBusinessClient' is created during this installation
- β) .msi files of the Client software are placed in that shared folder
- χ) The Client is installed using these .msi files on all the client computers

The following files are copied in the 'WinBackupBusinessClient' shared folder:

- Two MSI files of WinBackup Business Client for 32-bit Windows and 64-bit Windows. You have to choose one of those according to the installed OS in your client computers.
- A XML file with installation metadata.

There are two ways to install the Client in client computers:

- 1) Install it manually
- 2) Install automatically via Active Directory 'Group Policy' that determines which PCs to run on

Anyway, to install the Client, you have to locate the 'WinBackupBusinessClient' shared folder to run the MSI file. You can also copy the Client MSI and the XML file to any local folder of the client computers and run it from there.

Minimum System requirements to install and run the Client:

Minimum System Requirement

-
- Windows XP SP2
 - .NET Framework 4
 - 1 GB RAM
 - 40 MB of free hard disk space

Installing Client Manually in Computers

For manual installation, the Client MSI needs to be run (from the shared folder 'WinBackupBusinessClient') on the computer in which you intend to install the Client. You can also copy the .MSI and the .XML file from the shared folder to a local hard drive folder of the client computer and run it.

The installation steps are as follows.

Step 1: When you run the .msi file, the following dialog appears (see figure 1). If you want to cancel the Client installation, click the 'Cancel' button.

This is more suitable for Windows Workgroup networks rather than Active Directory domain networks.

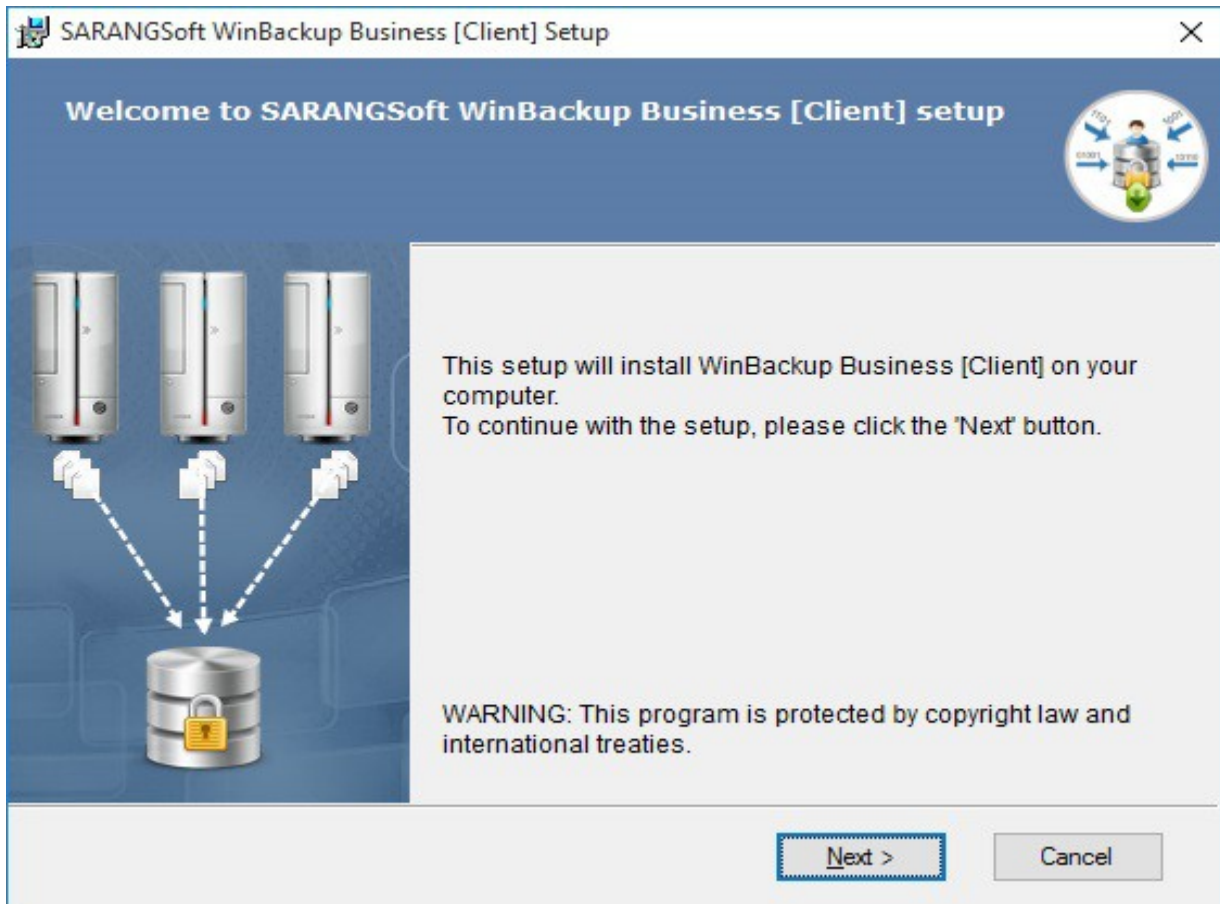


Figure 1: The opening dialog of WinBackup Business Client installation.

Step 2: "License Agreement" Dialog

The 'License Agreement' dialog shows the detailed description of the License Agreement for using WinBackup Business Client. Please read through this (see Figure 2). If you accept the terms and conditions, please click "I accept the terms of the license agreement" option, and then click 'Next'. Initially, the dialog appears with the 'Next' button inactive. It will be activated only after selecting the "I accept the terms..." option.

You can print a hard copy of the 'License Agreement' by clicking the 'Print' button. You can go back to the previous step by clicking on the 'Back' button, or may cancel the installation by clicking on 'Cancel'.

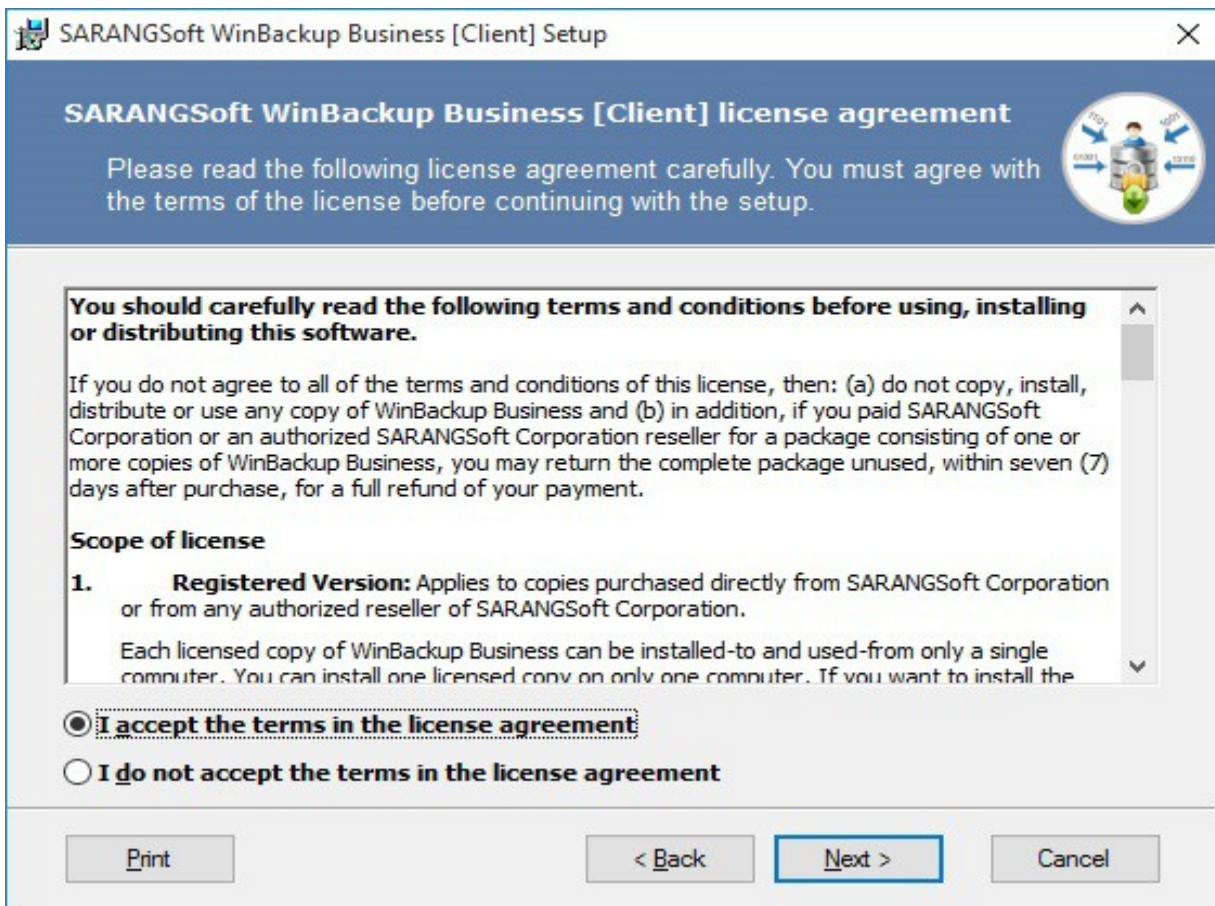


Figure 2: The 'License Agreement' dialog.

Step 3: Customizing the Installation Path

In the next dialog (see figure 3), you can choose the installation path for the application. The dialog appears with a default path. Install it in any other location by clicking the 'Browse...' button. Click 'Next' to proceed to the next step.

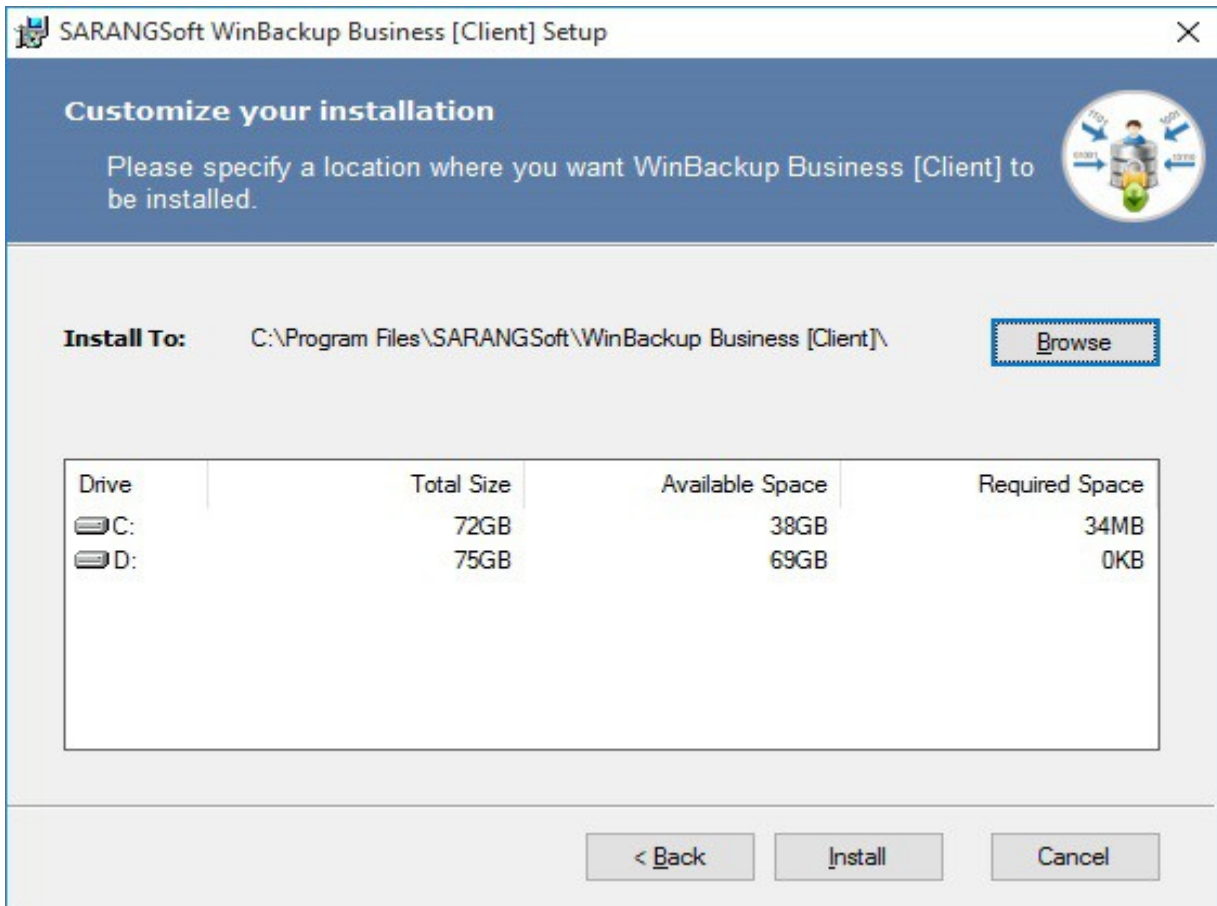


Figure 3: Choosing the path for installing WinBackup Business Client.

Step 4: Installation Progress

In this step you see the progress of 'WinBackup Business Client' installation. You may cancel the process by clicking on the 'Cancel' button (see Figure 4).

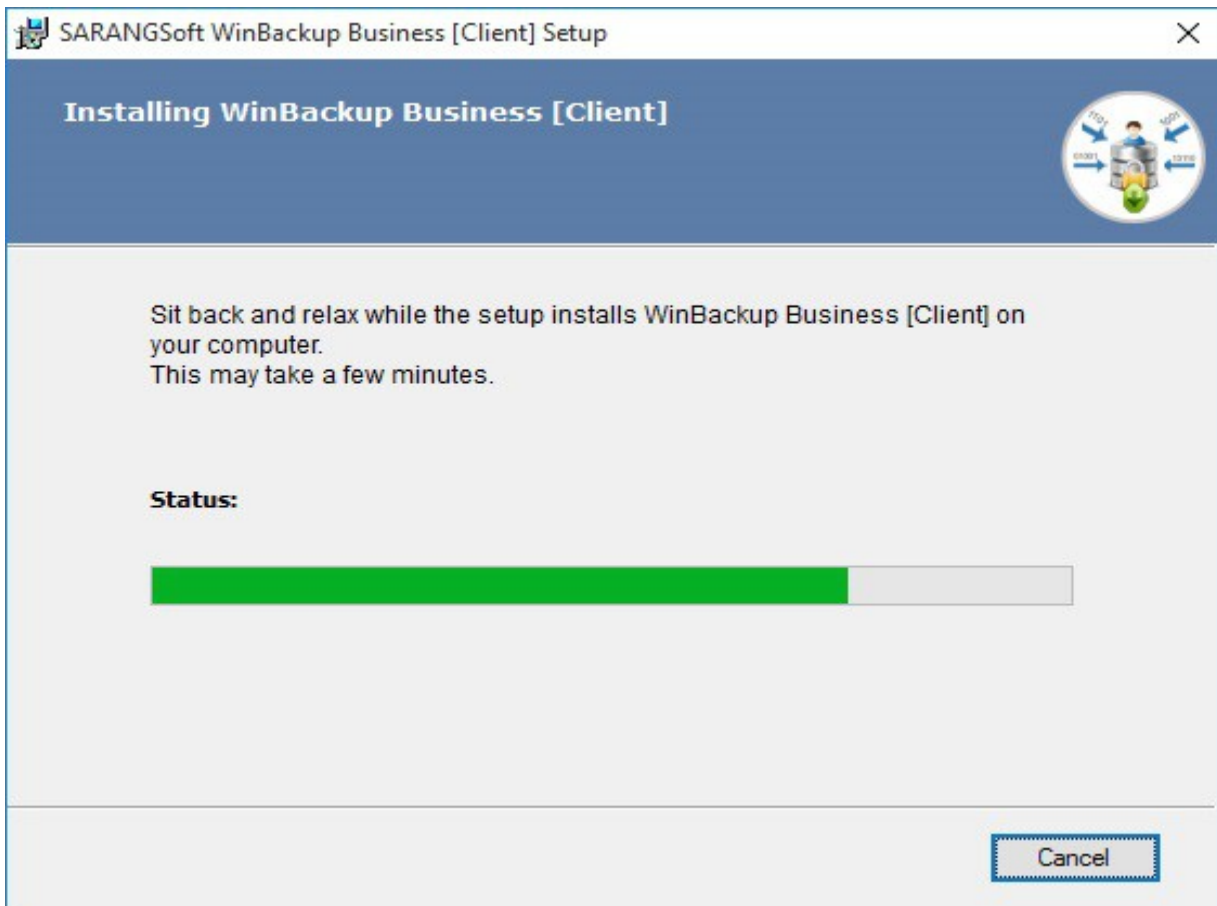


Figure 4: Progress of WinBackup Business Client installation.

Step 5: Finishing the Installation Process

This is the last step (see figure 5) of WinBackup Business Client installation. The dialog informs that the WinBackup Business Client has been successfully installed. Click on 'Finish' to complete the installation process.

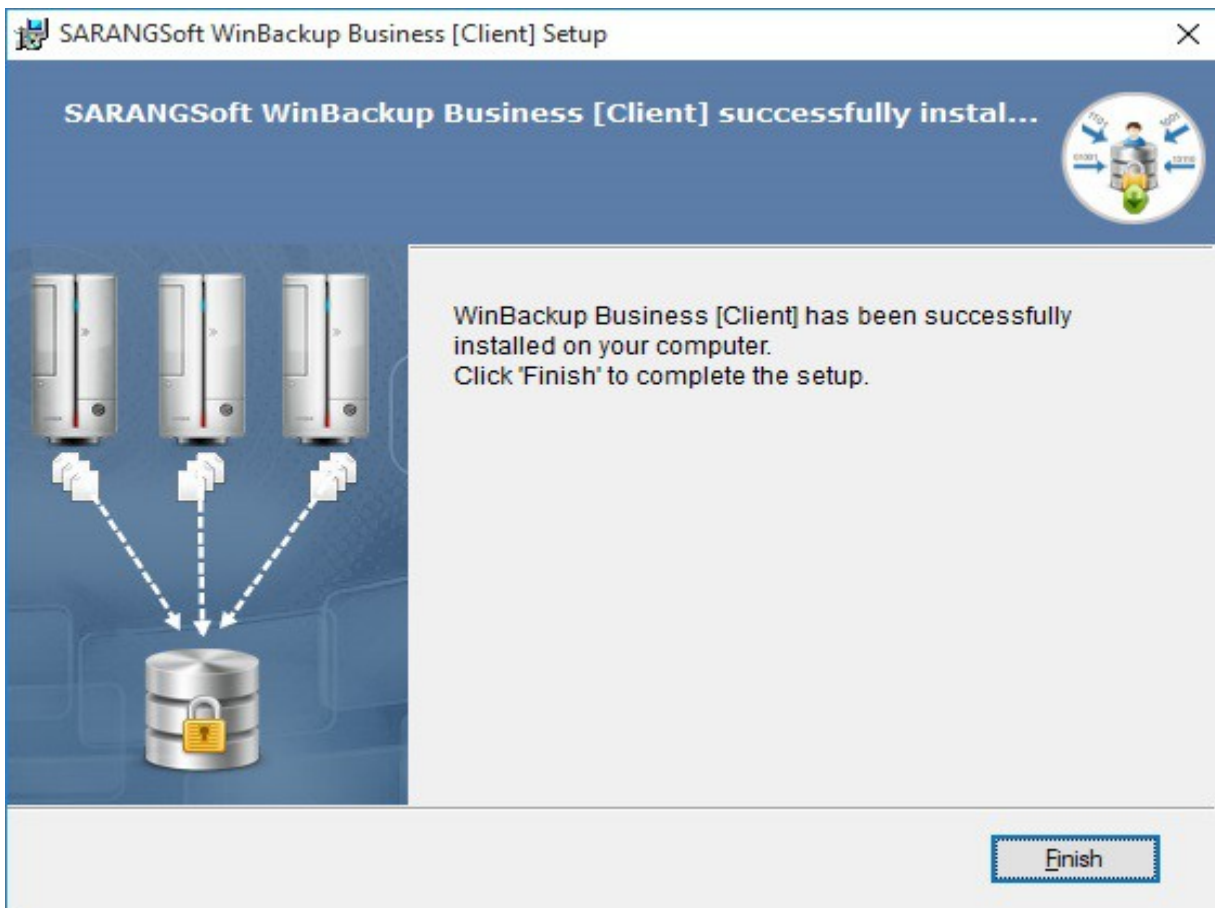


Figure 5: Finishing the installation process of WinBackup Business Client.

=====

Installing Client via Active Directory Group Policy

If the number of client computers in your network is high, it becomes time consuming to manually install an application in each computer. In that case, it's easier to deploy on computers across the network via Active Directory Group Policy. Since a Group Policy Object is implemented on the selected computers within the network automatically at the same time, installation workload and time taken are reduced significantly. This option is applicable only for Windows Active Directory domain networks (not for Workgroups).

The process of installing 'WinBackup Business Client' via GPO is as follows.

1. Go to *Start > Administrative Tools > Group Policy Management*.
2. The 'Group Policy Management' window opens up (see Figure 6). Under 'Domains', choose an OU (Organizational Unit) to create a GPO (Group Policy Object) within it. For example, Figure 6 displays two OUs, namely 'WinBackupBusiness_OU' and 'SysExpertez'_OU. In our example, we have chosen 'WinBackupBusiness_OU' as the OU.

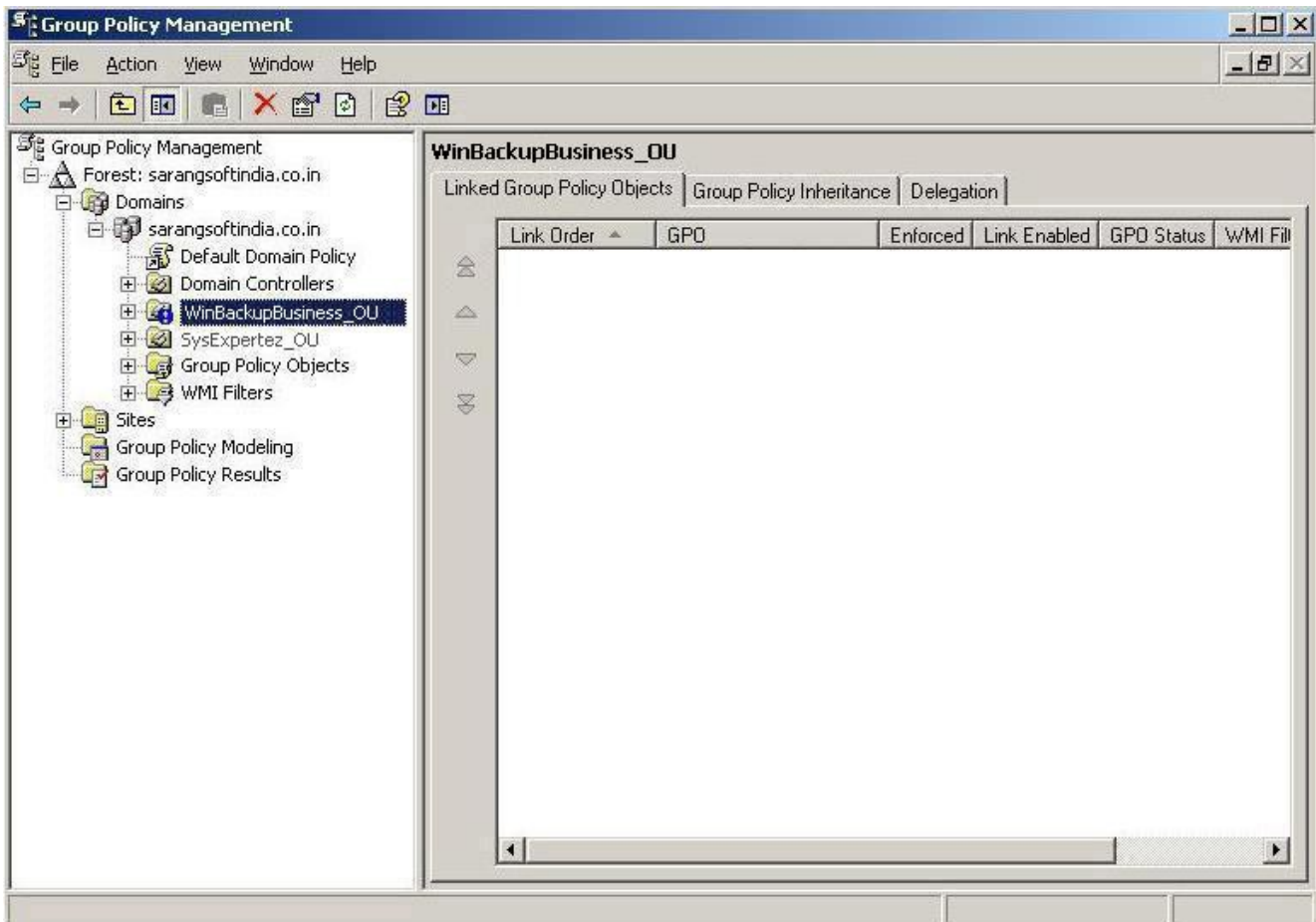


Figure 6: Selecting an OU (here 'WinBackupBusiness_OU') for installing the Client via GPO.

3. Right click on the OU 'WinBackupBusiness_OU' and select the option 'Create and Link a GPO Here...' (see Figure 7).

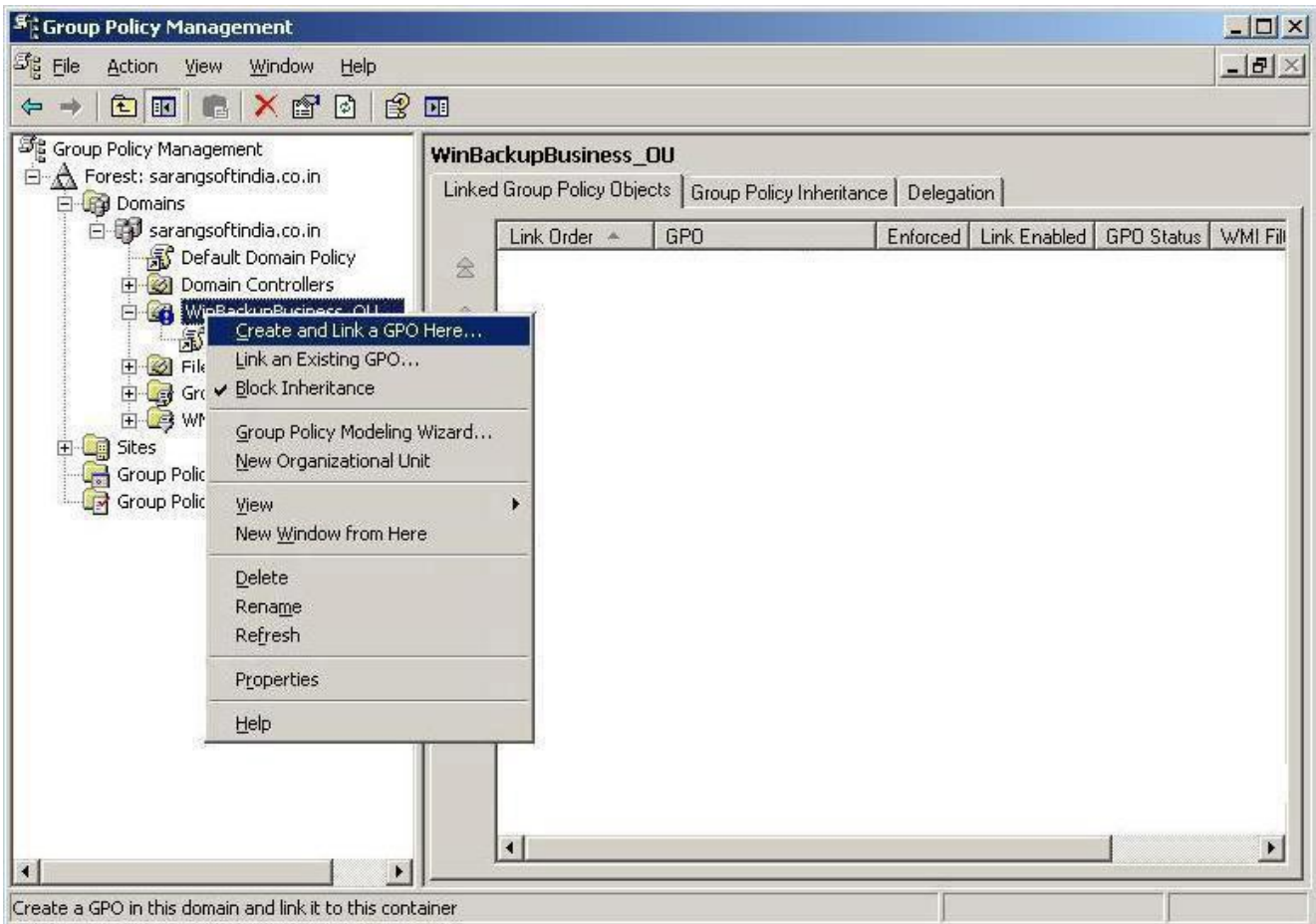


Figure 7: Select the option 'Create and Link a GPO Here...'

- The 'New GPO' pop-up window appears. Type in the name of the 'Group Policy Object' to be created. In this example, it is 'WinBackupBusiness_GPO' (see Figure 8).

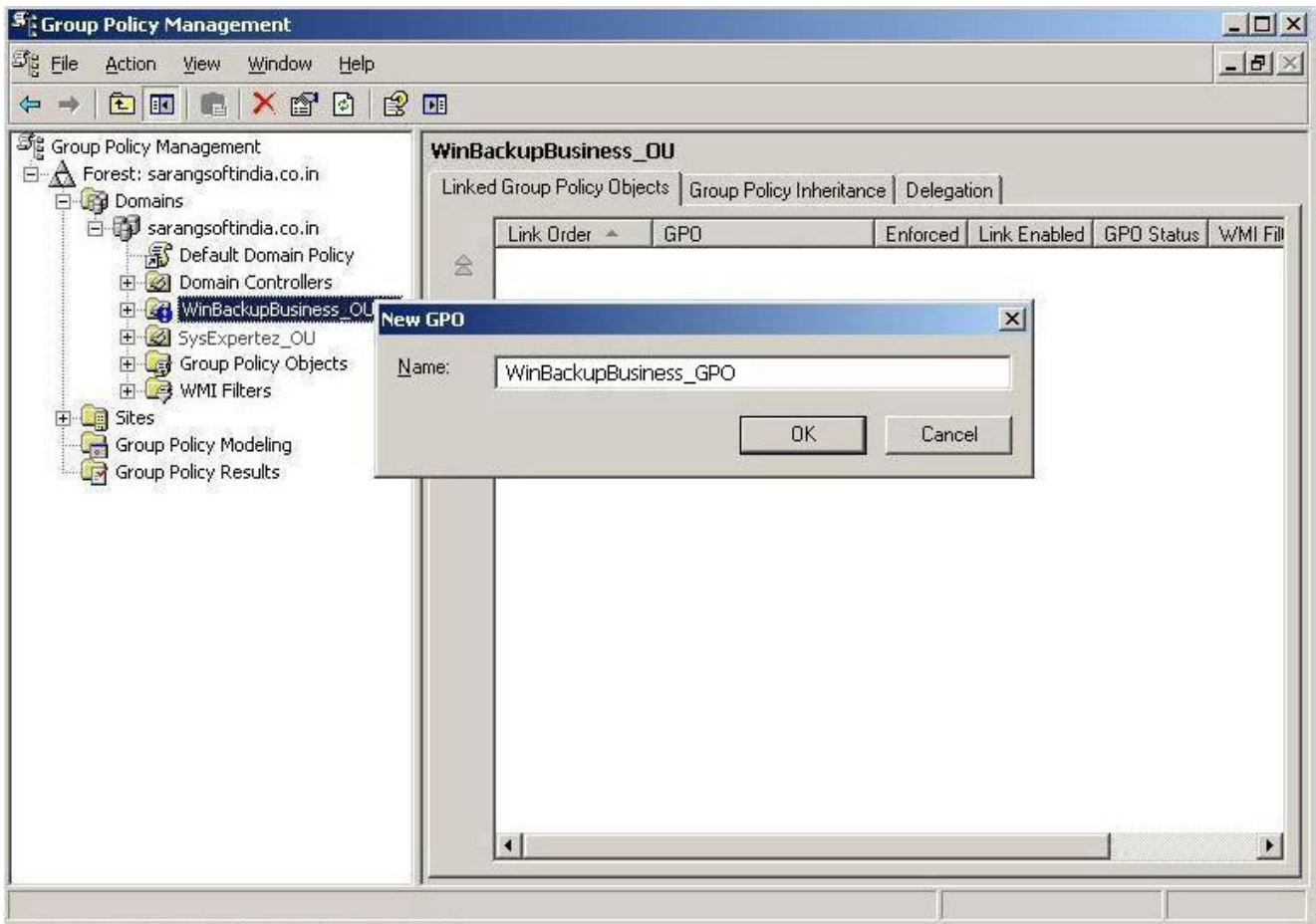


Figure 8: Create the 'WinBackupBusiness_GPO' in the OU named 'WinBackupBusiness_OU'.

5. In the right pane of the 'Group Policy Management' window, under 'GPO' tab of 'WinBackupBusiness_OU' OU, you will find the newly created GPO (see Figure 9). In the left pane, expand the 'WinBackupBusiness_OU' OU, so that the 'WinBackupBusiness_GPO' item appears under it. Right click on it, and choose the 'Edit' option from the pop-up menu (see Figure 9).

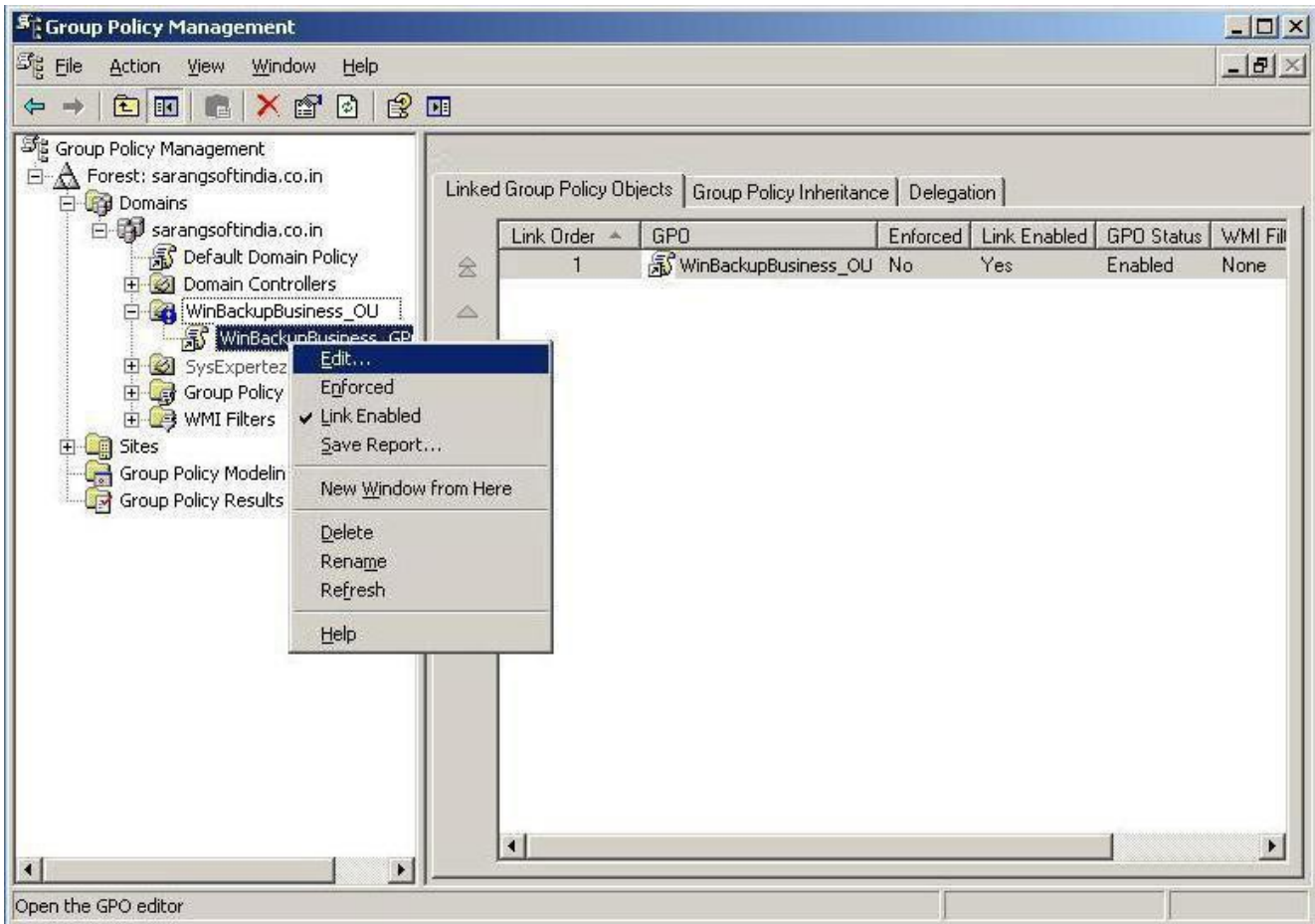


Figure 9: Right-click on the newly created GPO and choose 'Edit' in the pop-up menu.

- The 'Group Policy Object Editor' window opens up (see Figure 10). In the left pane, there are two sections, namely - 'Computer Configuration' and 'User Configuration', on which the group policies can be applied. Since we are deploying the application on computers, we'll choose 'Computer Configuration'.

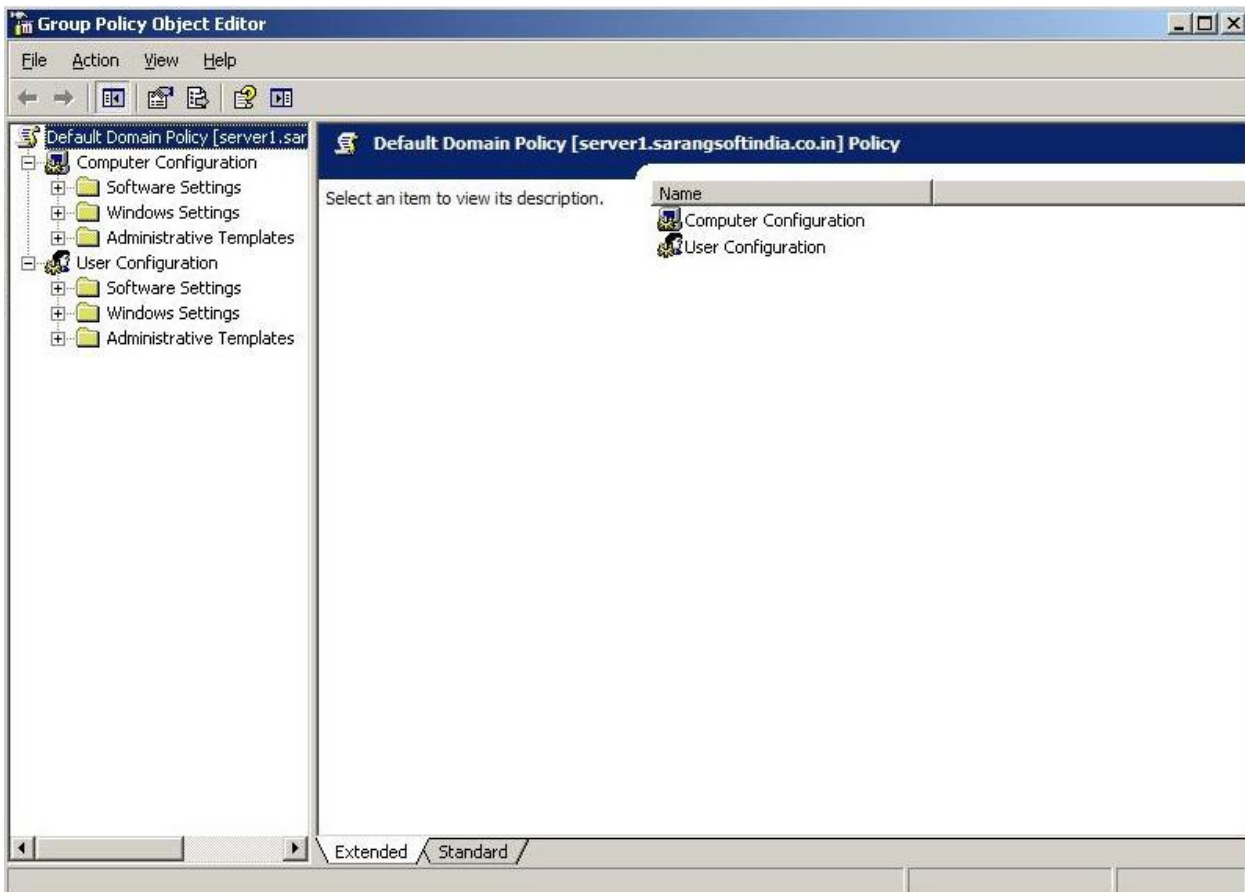


Figure 10: 'Computer Configuration' and 'User configuration' sections in 'Group Policy Object Editor'.

7. Under 'Computer Configuration', expand 'Software Settings', and right-click on 'Software Installation'. In the pop-up menu, choose 'New > Package...' (see Figure 11). Now you will be able to choose the package or application you want to deploy (in this case the WinBackup Business Client).

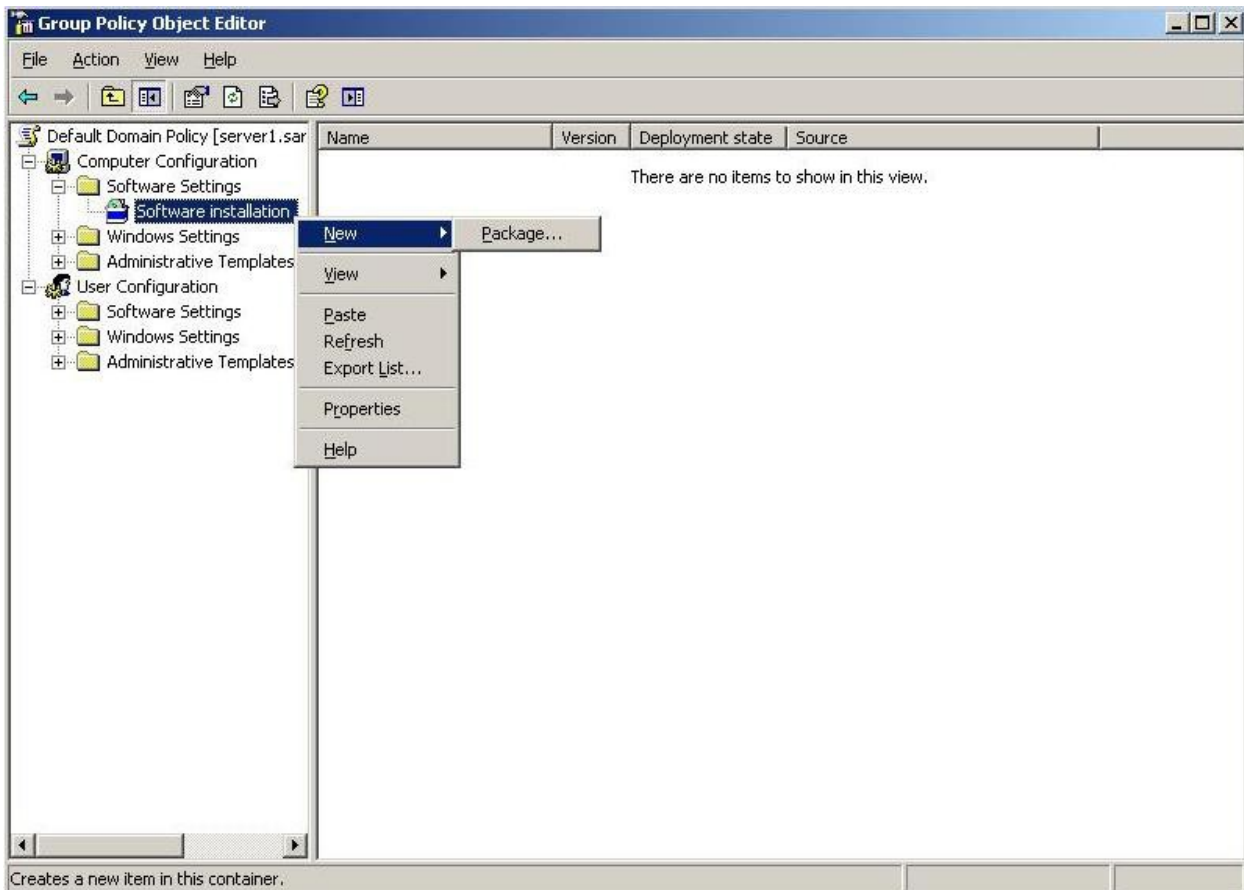


Figure 11: Right-click on 'Computer Configuration > Software Settings > Software Installation' to choose the application MSI for deployment.

8. Go to the 'WinBackupBusinessClient' shared folder and select the Client MSI you need – 32-bit or 64-bit version (see Figure 12).

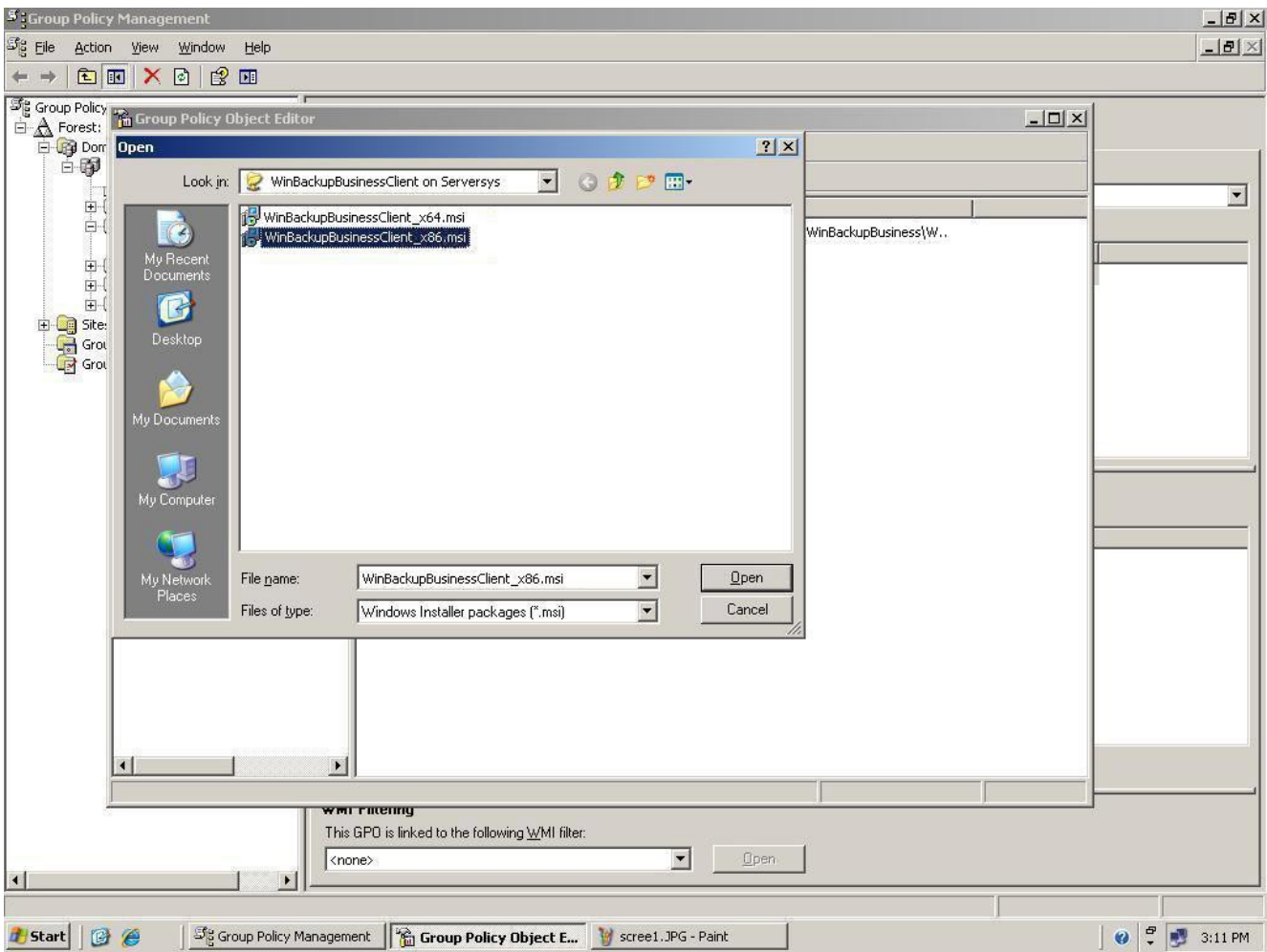


Figure 12: Select the Client MSI within 'WinBackupBusinessClient' shared folder.

10. Now the MSI will be seen in the right pane of 'Group Policy Object Editor' window (see Figure 13). Next the 'Deploy software' dialog appears, where you have to select the deployment method for the selected MSI. Choose the option 'Assigned', and click 'OK'.

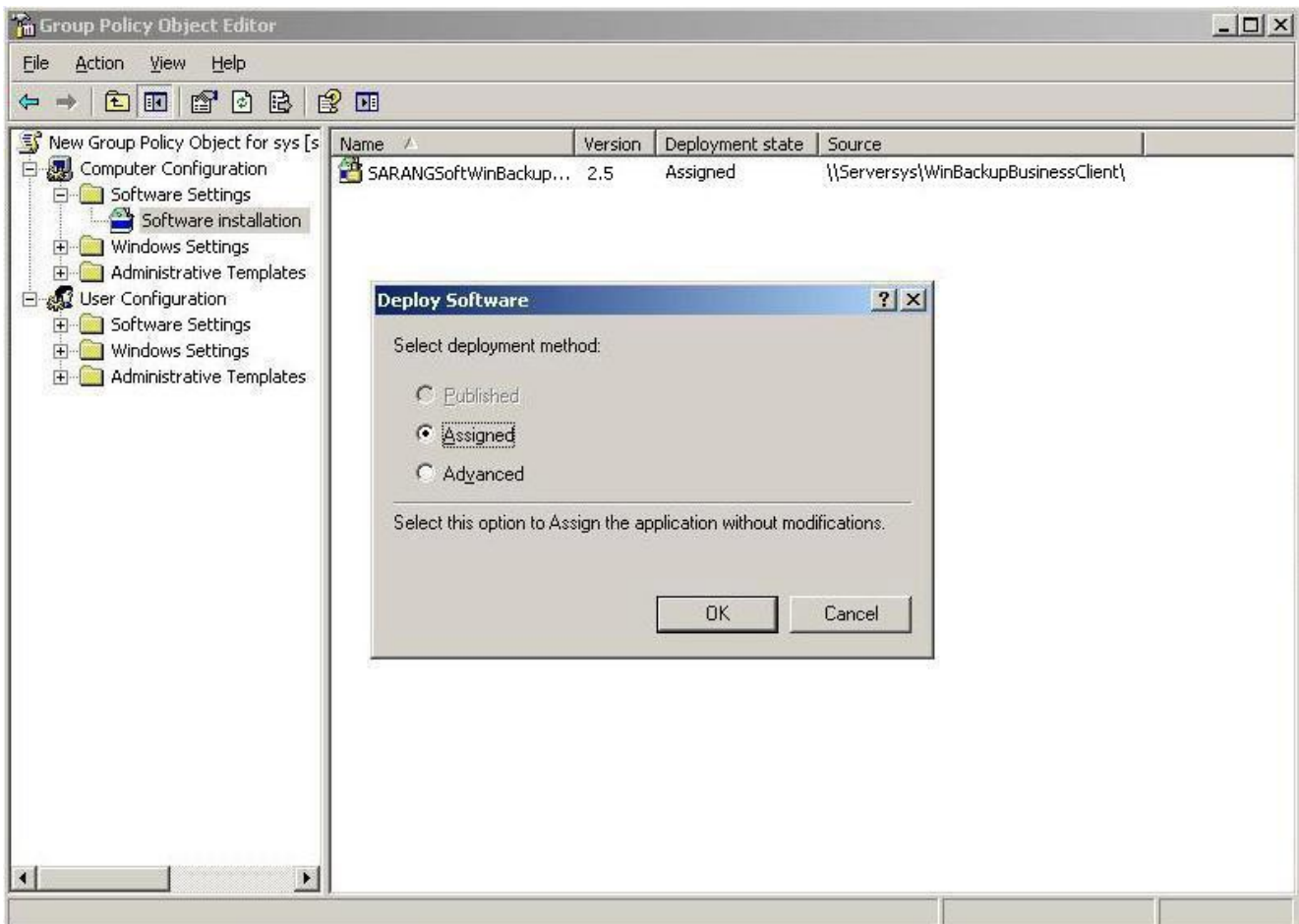


Figure 13. 'Deploy Software' dialog to assign the deployment of 'WinBackup Business Client' MSI.

Before you test this on one of your client computers, please run the command 'gpupdate'. In normal case, we will run this command from the server, so that all the client computers can be updated simultaneously. But, in case if any of the client computers has not been updated for any reason, then we should run this command from that particular client.

To run this command, open a 'Command Prompt' on your Domain Controller and type 'gpupdate/force' - in case, if you run it from the server. If you run it from a client computer, then type the command as just 'gpupdate'.

If you have a mix of client computers running 32-bit and 64-bit Windows, you have to use the 32-bit MSI, or you have to create two different OUs – one for 32-bit PCs and another for the 64-bit PCs, and then assign the corresponding MSIs for those OUs.