

***SARANGSoft***



# **WinBackup Business v2.5**

## **Installation Guide**

(November, 2015)

You can install WinBackup Business either from the installation disk of the boxed product - purchased from SARANGSoft (or from its authorized partners/resellers) or from the digital download from SARANGSoft website ([www.sarangsoft.com](http://www.sarangsoft.com)). Installation of WinBackup Business consists of two separate parts – installation of 'Database Configuration' and installation of 'WinBackup Business Administrator Console'. One 'Administrator Console' gets installed automatically in the computer where the 'Database Configuration' is installed. If you want additional 'Administrator Consoles', you need to purchase the additional licenses from SARANGSoft. You can choose the option 'WinBackup Business Administrator Console' in WinBackup Business setup to install these additional 'Administrator Consoles'.

NOTE: You will also need to install WinBackup Business Agent on every client computer in your network. That installation process is described in the "WinBackup Business Client Agent Installation Guide" document.

#### **Minimum System Requirements for installing 'Database Configuration' with 'Admin Console'**

- Windows VISTA
- .NET Framework 4
- SQL Server 2012 or higher
- 2 GB RAM
- 50 MB of free hard disk space for application files and 10 GB for databases.

#### **Recommended System Requirements for installing 'Database Configuration' with 'Admin Console'**

- Windows 7 or higher
- .NET Framework 4
- SQL Server 2012 or higher
- 4 GB RAM
- 60 MB of free hard disk space for application files and 100 GB for databases.

#### **Minimum System Requirements for installing only 'Admin Console'**

- Windows VISTA
- .NET Framework 4
- SQL Server 2012 or higher
- 2 GB RAM
- 50 MB of free hard disk space

#### **Recommended System Requirements for installing only 'Admin Console'**

- Windows 7 or higher
- .NET Framework 4
- SQL Server 2012 or higher
- 4 GB RAM
- 60 MB of free hard disk space

### **Installing WinBackup Business 'Database Configuration' with 'Admin Console'**

The following step-by-step guide explains how to install WinBackup Business Database and Admin Console. Before starting the installation, it is recommended to close all non-essential applications.

### Step 1: The Opening Dialog

1. Insert the 'WinBackup Business Installation' CD in your CD/DVD-ROM Drive. The autorun feature will run the *Setup* file automatically and the first dialog appears (see Figure 1).
2. Click 'Next' to continue to the next step. It will open the 'License Agreement' dialog.

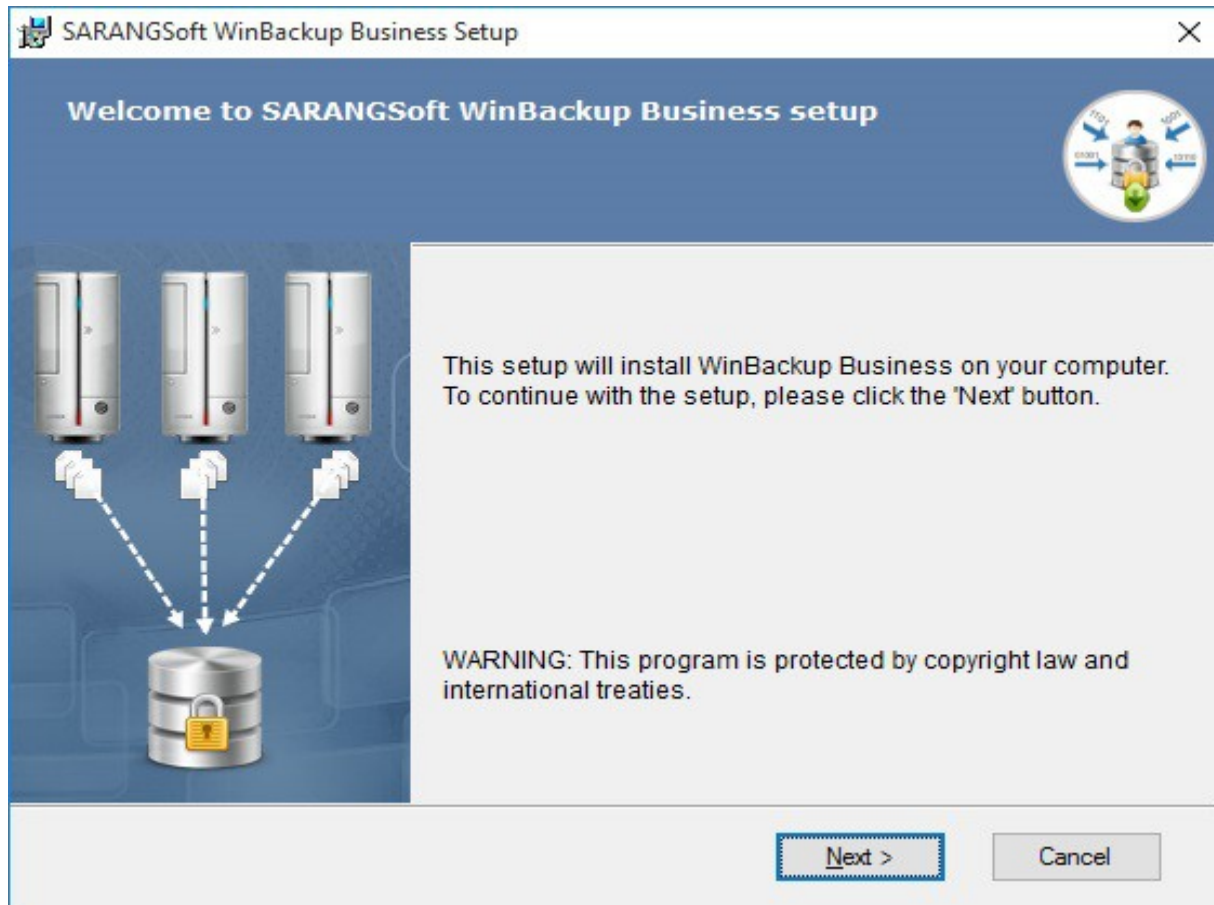


Figure 1: Starting dialog for installation of WinBackup Business.

### Step 2: "License Agreement" Dialog

The 'License Agreement' dialog shows the detailed description of the License Agreement for using WinBackup Business. Please read through this (see Figure 2). If you accept the terms and conditions, please click "I accept the terms of the license agreement" option, and then click 'Next'. Initially, the dialog appears with the 'Next' button inactive. It will be activated only after selecting the "I accept the terms..." option.

You can print a hard copy of the 'License Agreement' by clicking the 'Print' button. You can go back to the previous step by clicking on the 'Back' button, or may cancel the installation by clicking on 'Cancel'.

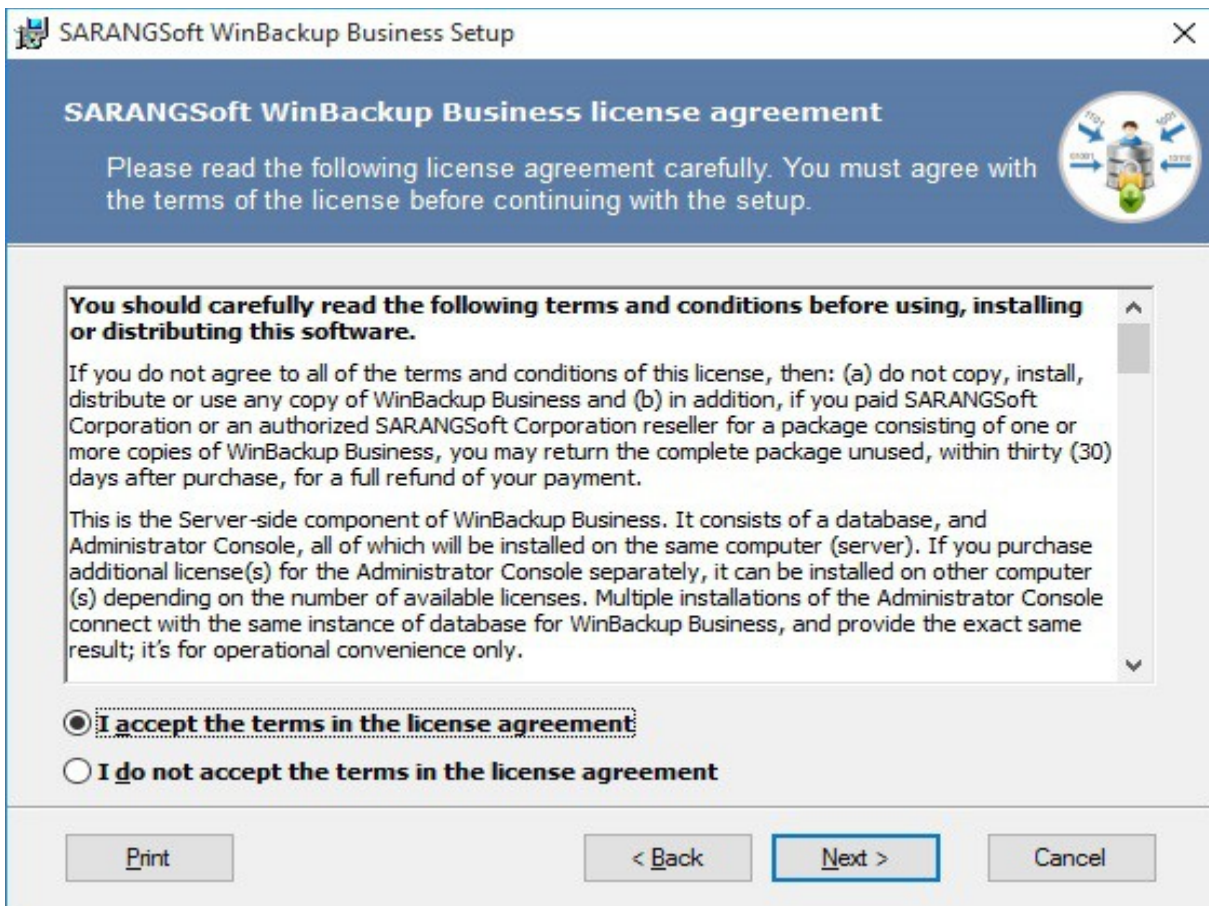


Figure 2: The 'License Agreement' dialog.

### Step 3: Customizing the Installation Path

In the next dialog, you can choose the installation path for the application. The dialog appears with a default path. Install it in any other location by clicking the 'Browse...' button. Click 'Next' to proceed to the next step.

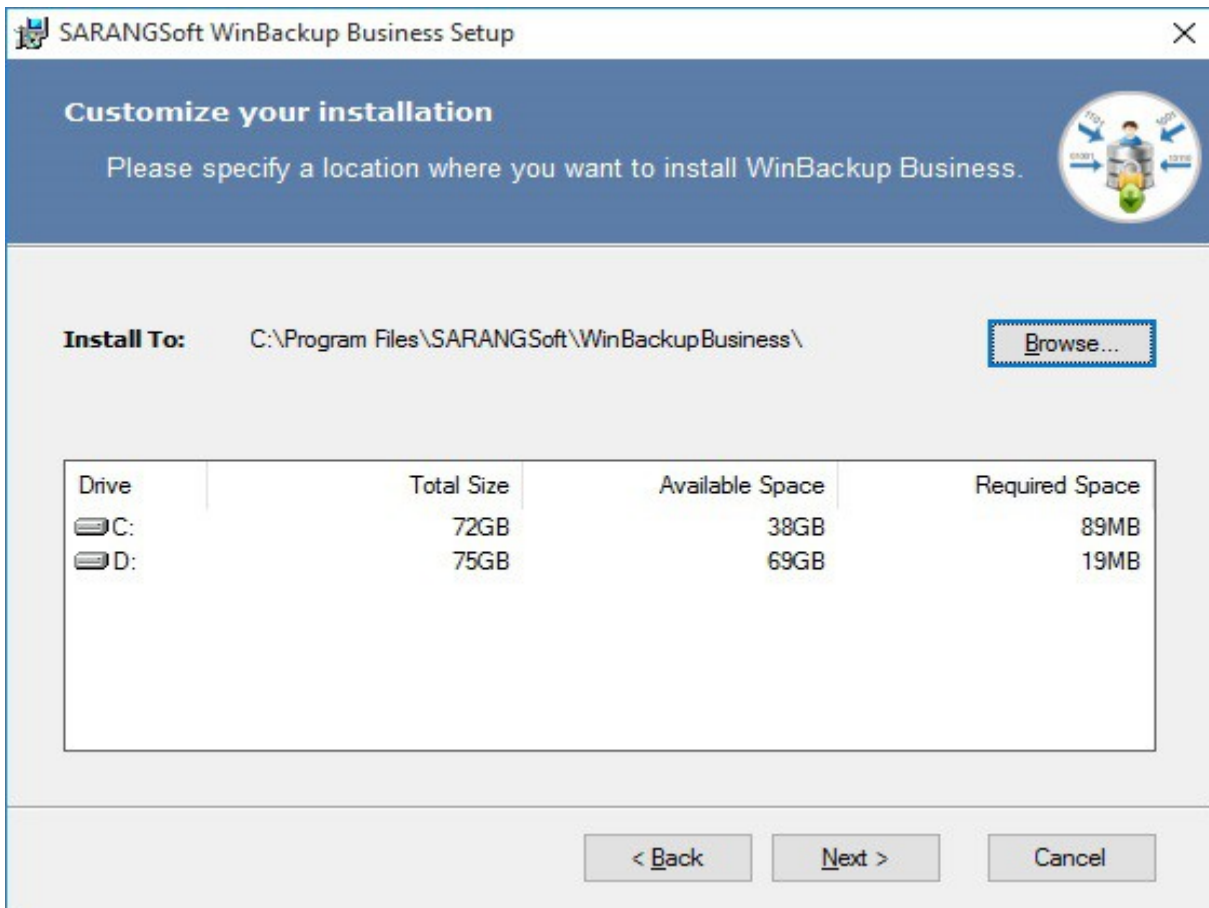


Figure 3: Choosing the path for installing WinBackup Business.

#### Step 4: Selecting the component you need

This dialog (Figure 4) appears with two radio button options. Select any one of these options depending upon your requirements.

- *Database Configuration with 'Administrator Console'*: Select this option if you decided to install 'Database Configuration' in this computer. This needs to be installed in the same computer which contains the SQL Server.
- *Administrator Console*: Choosing this option, will allow you to install additional 'Administrator console' from where you will be able to configure and control the backup arrangements across your network.

**NOTE:** The system requirements for installing these options have been mentioned at the beginning in this document.

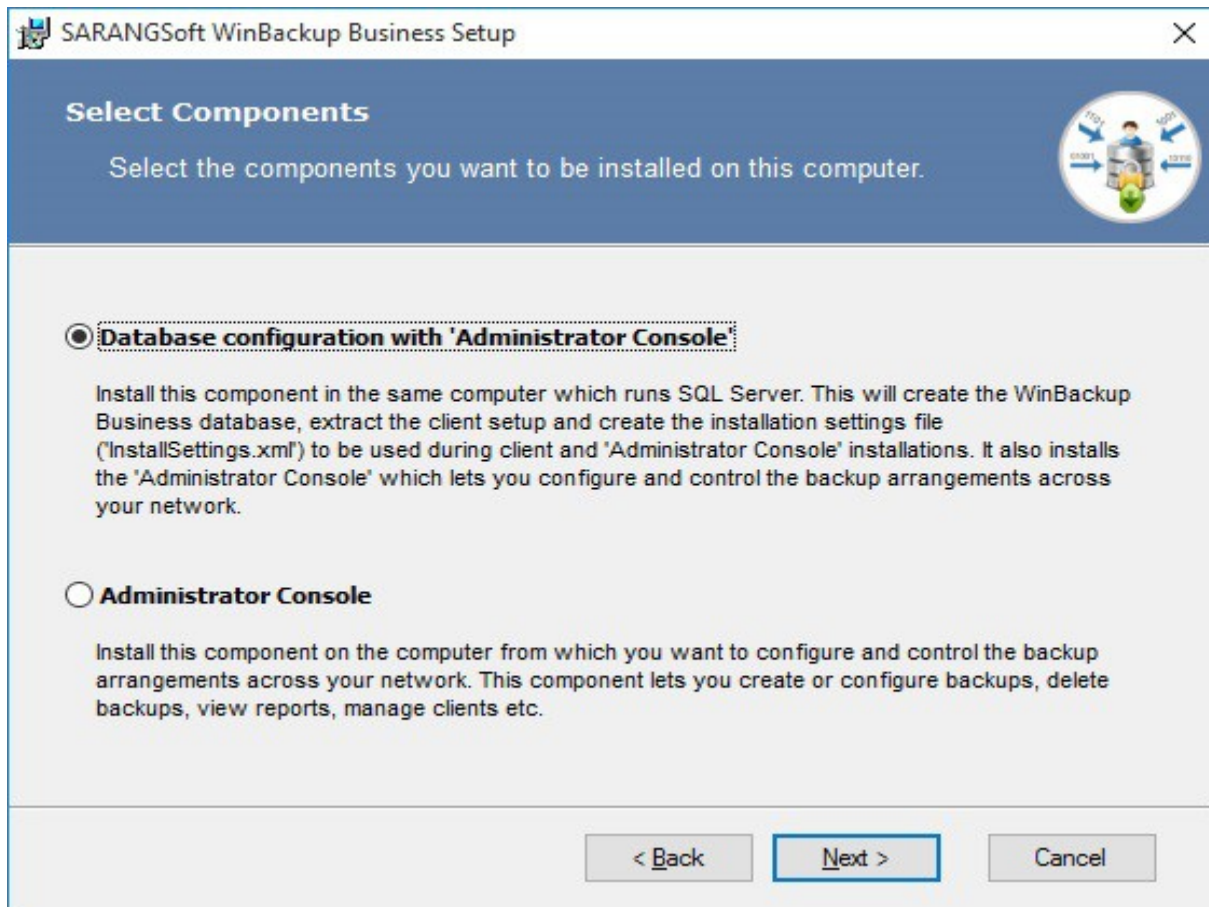


Figure 4: 'Select Components' dialog.

### Step 5: Specifying the location to extract WinBackup Business Client setup

In this dialog (Figure 5) you can specify the location, where the Client installer will be extracted. Two .msi files (for 32-bit and 64-bit Windows) and a XML file for the client setup are placed at this location. Later on the client setup from that location can be installed in other computers, either manually (generally for Workgroups) or via a Group Policy Object (for Active Directory domain networks).

Click the 'Browse...' button to specify the location. Click 'Next' to continue.

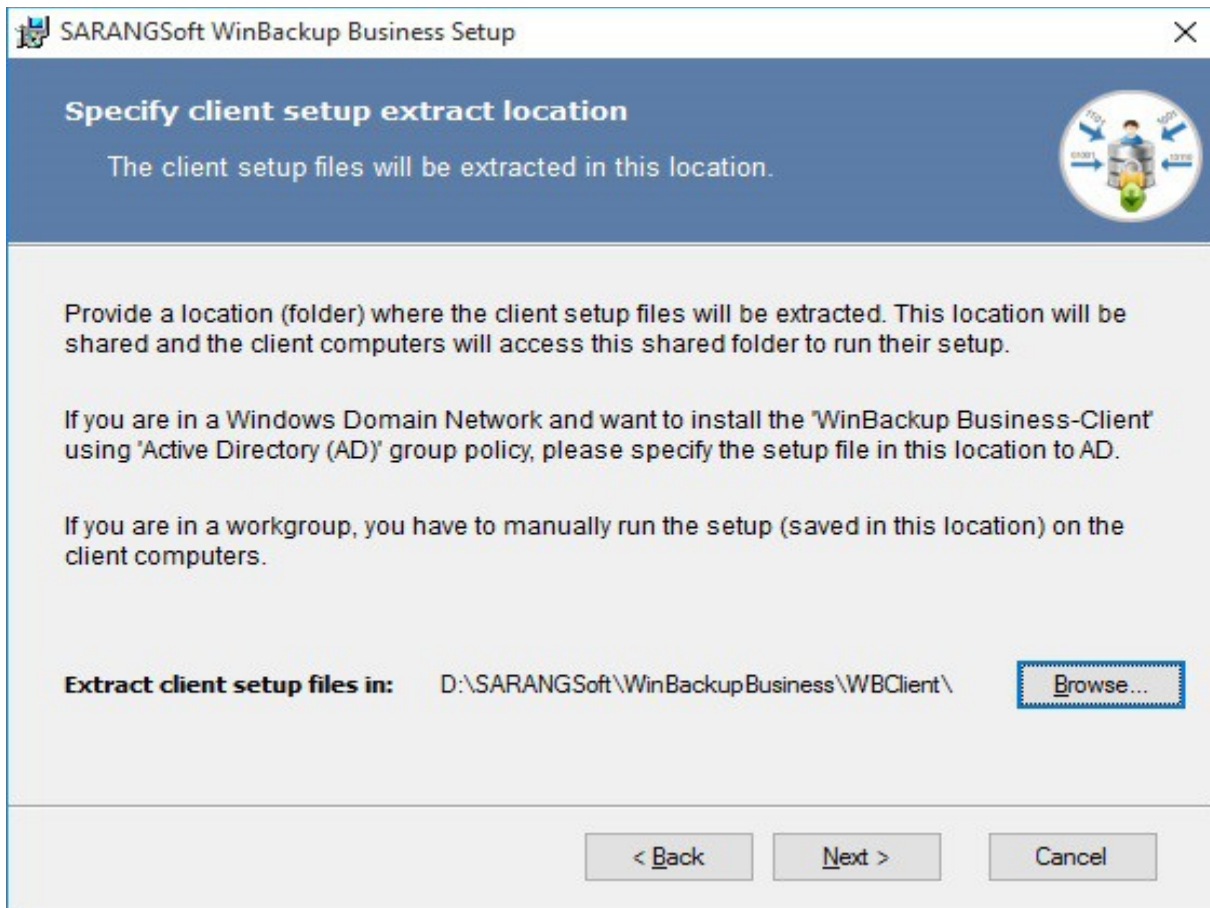


Figure 5: Specify the location to extract the installation files of 'WinBackup Business client' installer.

### Step 6: Specify Database Information

WinBackup Business uses SQL Server Express as its database backend. In the next dialog (Figure 6), you can specify the database information as follows.

1. Specify the SQL Server instance in the 'SQL Server instance' drop down list. SQL Server might have separate instances (different working environments) created for different applications installed in the same computer that uses SQL Server as a database. Specify the instance name which will contain the WinBackup Business databases.
2. Specify the *Username* and *Password* for logging into the database. The specified SQL Server instance must be configured for SQL Server/mixed mode authentication.
3. Specify the location to store the WinBackup Business database. In the 'Store Database in' section, click on 'Browse...' to specify this location.
4. Click 'Next' to proceed to the next step.

The screenshot shows a Windows-style dialog box titled "SARANGSoft WinBackup Business Setup". The main heading is "Specify database information" with a sub-instruction: "Provide the information required for connecting to SQL Server." There is a circular icon on the right showing a person with a server and data flow arrows. The form contains the following fields and controls:

- SQL Server instance:** A dropdown menu currently showing "SQLEXPRESS".
- Username:** A text input field containing "sa".
- Password:** A text input field filled with ten dots.
- A note below the fields: "The SQL Server instance must be configured for SQL Server or mixed mode authentication."
- Store databases in:** A text input field containing "D:\SARANGSoft\WinBackupBusiness\Data\" and a "Browse..." button to its right.
- At the bottom, there are three buttons: "< Back", "Next >" (which is highlighted with a blue border), and "Cancel".

Figure 6: Specify WinBackup Business (SQL Server) database information. WinBackup Business

### Step 7: Client computer changes options

The following options need to be set for successfully configuring backup on the client computers. WinBackup Business can set these options automatically, if you choose so.

- In Windows XP/Server 2003, 'Remote Registry' service needs to be running (*by default this feature is turned-on in Windows XP/Server 2003*).
- In Windows XP/Server 2003 firewall, 'File and printer sharing exception' needs to be enabled.
- In Windows Vista or higher, 'Remote scheduled tasks management' firewall exception needs to be enabled.
- Workgroup computers only: For remote access to PCs within a workgroup, Windows can authenticate the users either as Guests or as the users themselves. For WinBackup Business to configure a backup, each user needs to be authenticated with the corresponding username and password, rather than being treated as a Guest.



Select the options which you want to be set automatically during WinBackup Business [Client] setup. Click 'Next' to proceed to the next step.

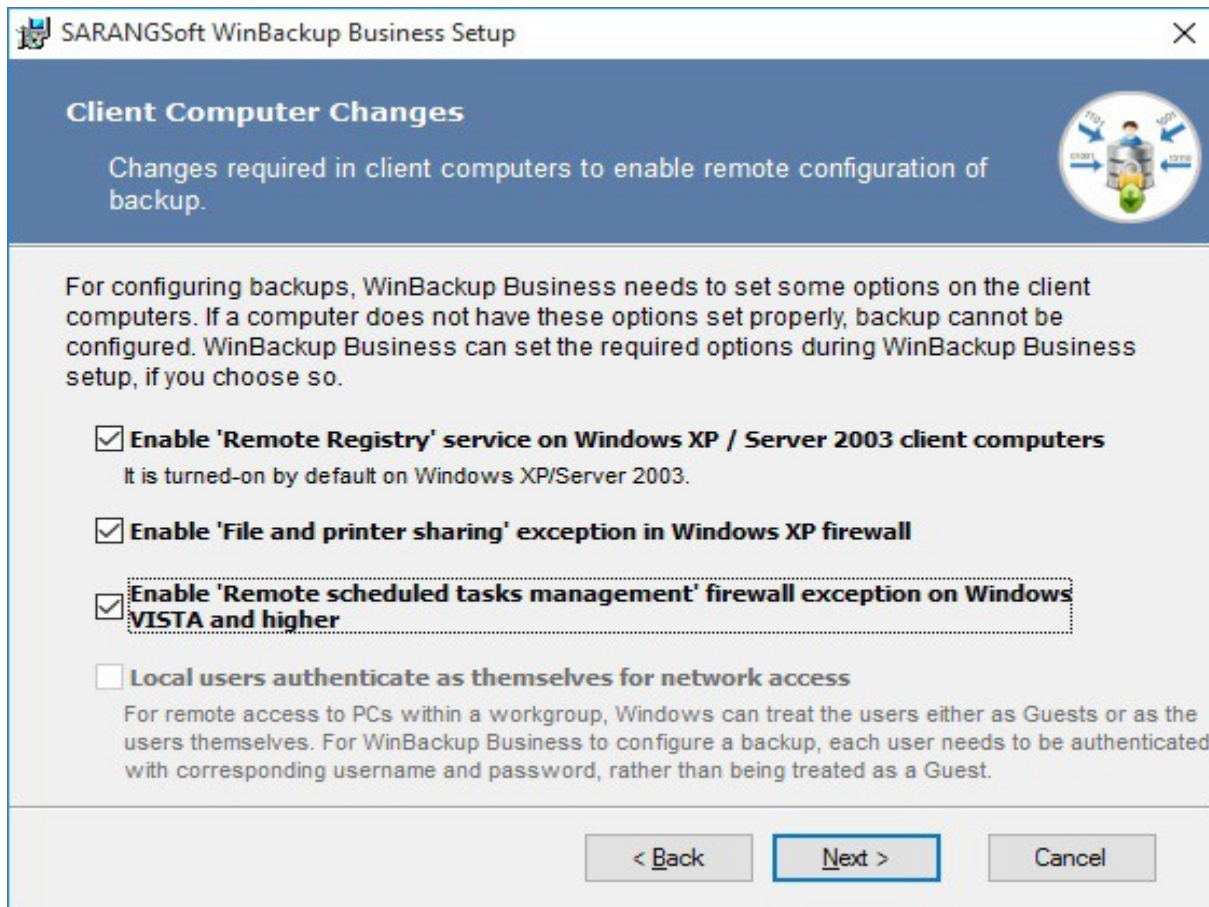


Figure 7: Selecting options for configuring backups for remote computers

### Step 8: Create an Administrator account for backup configuration

WinBackup Business needs a user account (domain user if you are running WinBackup Business in a domain network), which will be used by WinBackup Business to remote schedule and run backups on client computers. This user **need not** be a domain administrator, but will be made a local administrator of the client computers by WinBackup Business [Client] setup. This will ensure that WinBackup Business [Client] can access files and folders for taking the backup. You also need to give this user account 'Read and Write' access to the backup destination folder when you configure a new backup.

If you plan to backup data from Windows XP/Server 2003 computers, it is recommended that you specify a username whose password will not change. Due to a Windows Task Scheduler bug in Windows XP and Server 2003, scheduled backups stop working if password for the user account is changed later on.

If you are working in a **workgroup**, you have to have a common username across all the computers in the workgroup. This can be a user dedicated entirely for WinBackup Business purposes. This user should also carry the same password across all the workgroup computers, else network shares will not be accessible and WinBackup Business will not be able to save the backup to a network location or schedule the backup remotely from the 'Administrator Console'.

Provide the Account *Username* in the relevant box (see Figure 8).

Click on '*Install*' button to start the installation process.

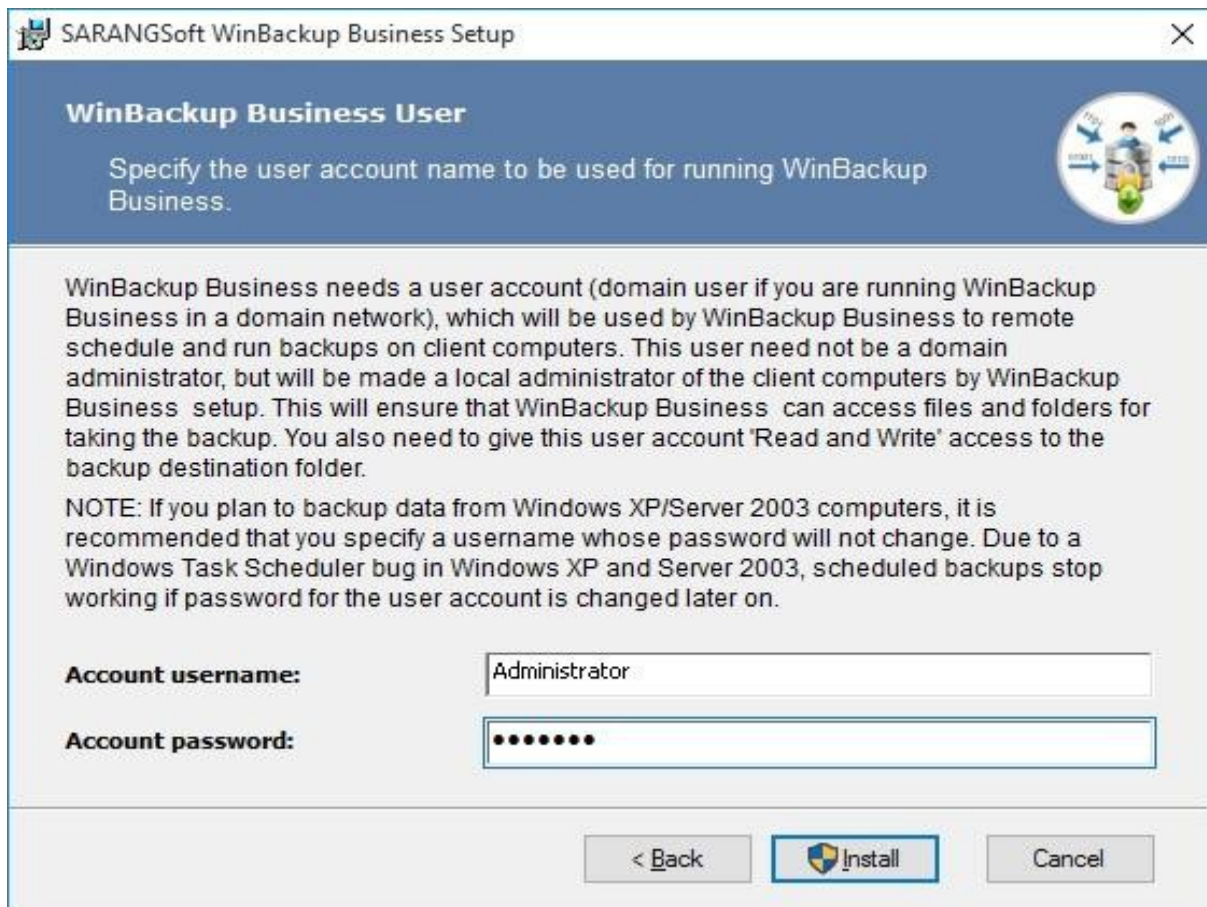


Figure 8: Provide the account information.

### Step 9: Installation Progress

In this step you see the progress of 'WinBackup Business' installation. You may cancel the process by clicking on the 'Cancel' button (see Figure 9).

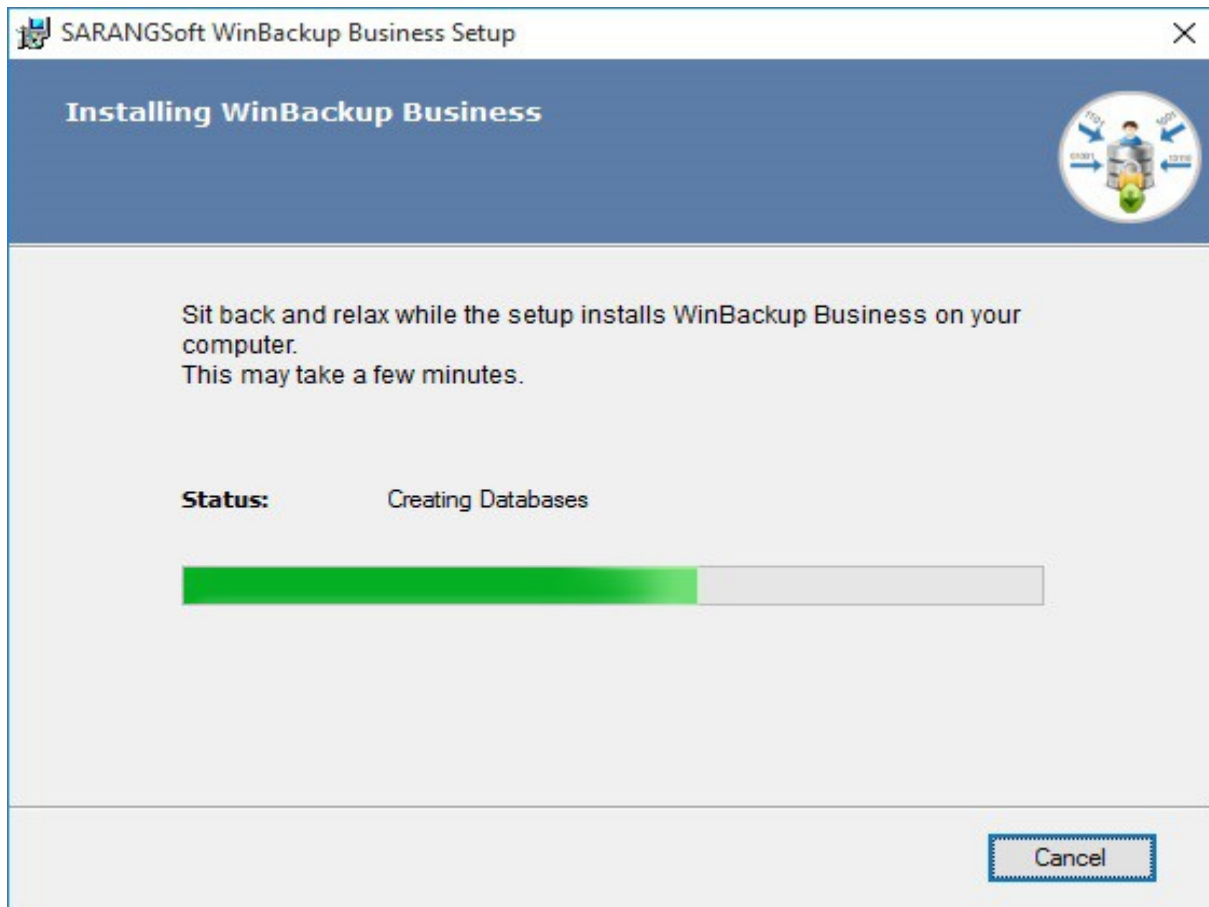


Figure 9: Progress of WinBackup Business installation.

### Step 10: 'WinBackup Business Successfully Installed' dialog

The next dialog (Figure 10) that appears, informs that WinBackup Business has been installed on the computer successfully. Click 'Next' to proceed to the next step.

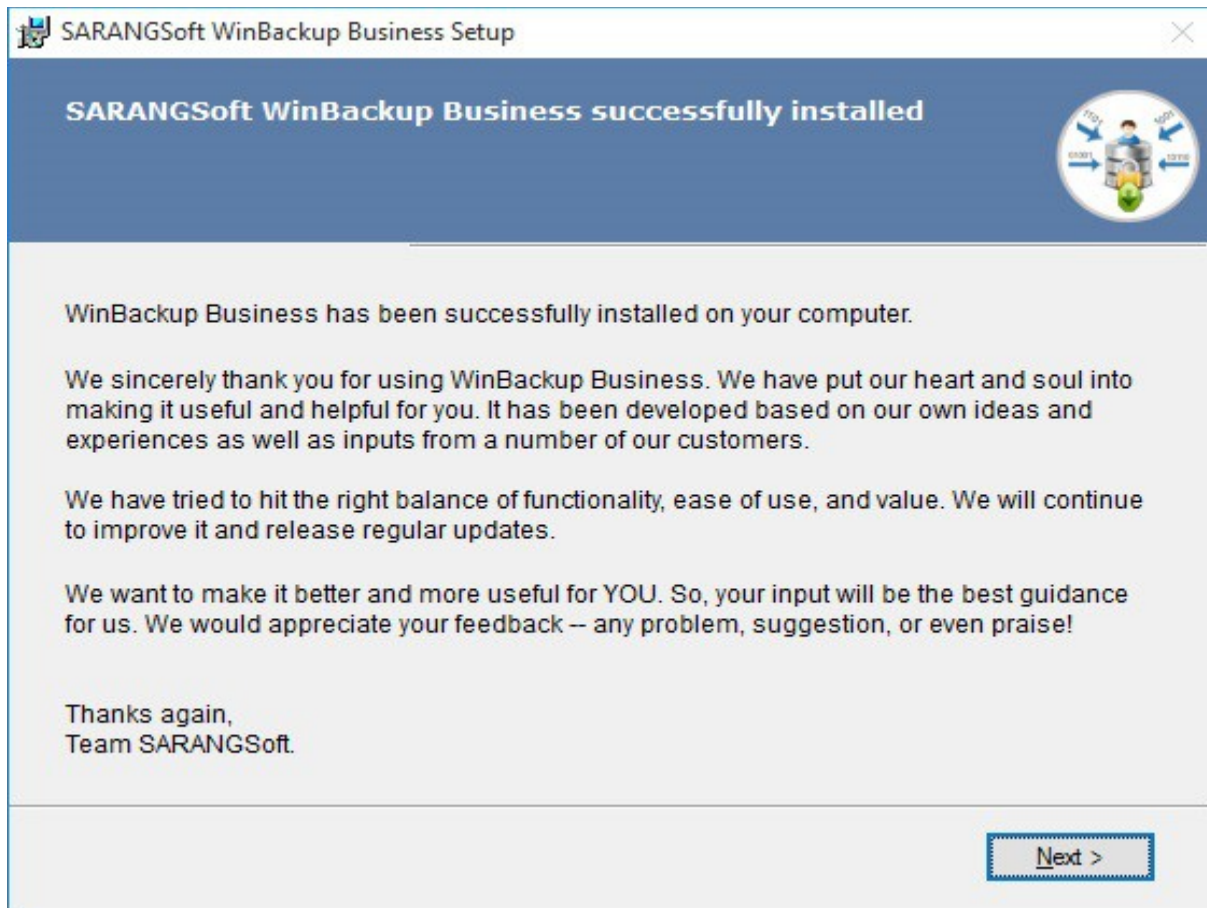


Figure 10: Dialog that informs that WinBackup Business has been installed successfully on the computer.

### Step 11: Finishing the Installation Process

This is the last step of WinBackup Business installation. The dialog shows three (3) options, out of which you need to choose any one to finish the setup. The options are as follows:

- **Close setup:** Finishes setup process, closes the setup dialog but does not run the application.
- **Close setup and run WinBackup Business:** Finishes setup process, closes the setup dialog, as well as runs 'WinBackup Business Control Panel'.
- **Close setup and check product updates on the web:** Finishes setup, closes the setup dialog and launches an application which checks the SARANGSoft website ([www.sarangsoft.com](http://www.sarangsoft.com)) for any updates of the product.

Choose an option you need and click on 'Finish' button to finish the installation process.

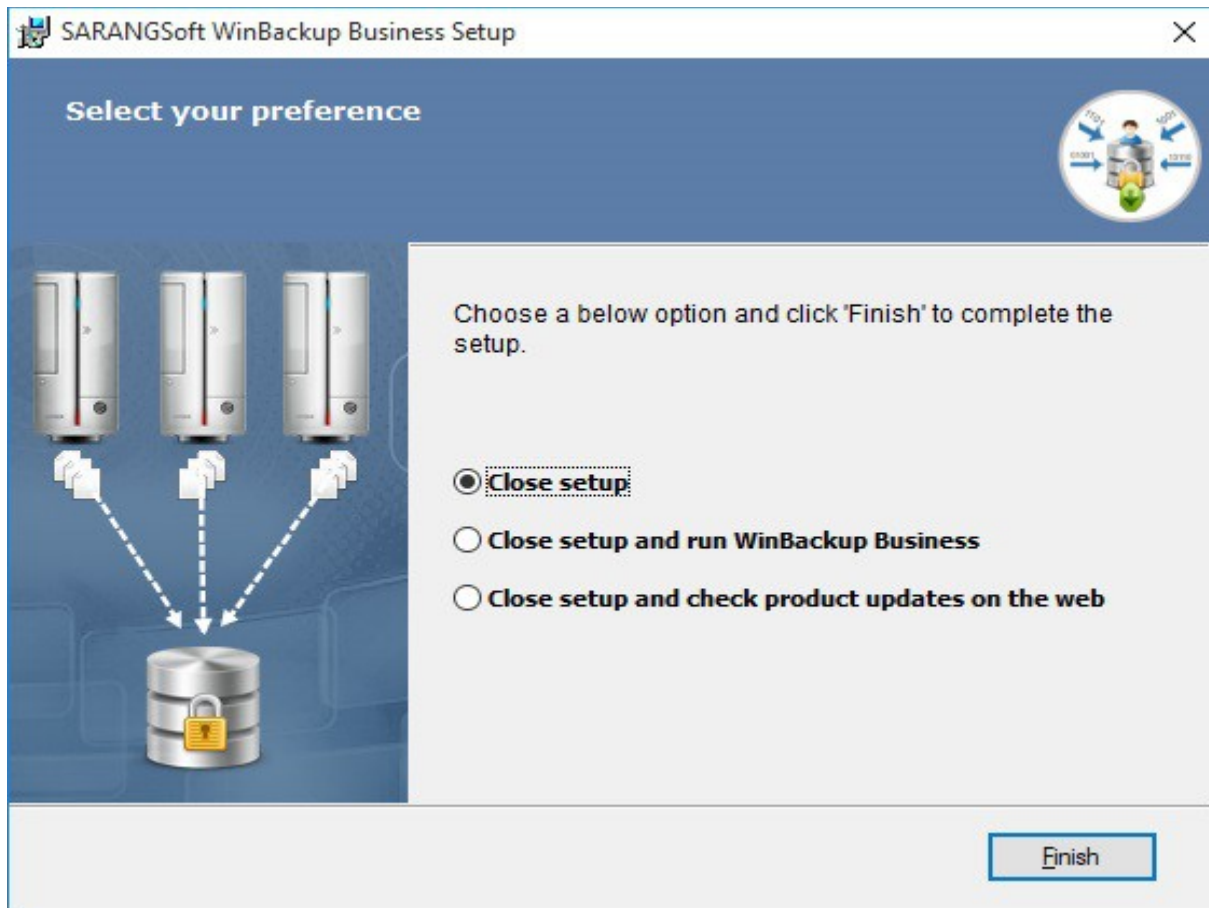


Figure 11: Finishing the installation process.

### Installing WinBackup Business 'Administrator Console' only

Before installing the 'Administrator console', make sure that the WinBackup Business 'Database Configuration with Administrator Console' has already been installed on another computer. Since the 'Administrator Console' interacts with WinBackup Business 'Database Configuration', it is a must to install WinBackup Business 'Database Configuration with Administrator Console' first, and then the 'Administrator Console'. During installation of 'Administrator console', it asks for the 'InstallSettings.xml' file that was generated in the computer where you installed the 'Database Configuration with Administrator Console' component. The file will be present in a shared folder called 'WinBackupBusinessClient' in the computer where the 'Database Configuration with Administrator Console' is installed.

The steps for installing the 'Administrator Console' are as follows.

Before starting the installation, it is recommended to close all non-essential applications.

### Step 1: The Opening Dialog

1. Insert the 'WinBackup Business Installation' CD in your CD/DVD-ROM Drive. The autorun feature will run the *Setup* file automatically and the first dialog appears (see Figure 12).
2. Click 'Next' to continue to the next step. It will open the 'License Agreement' dialog.

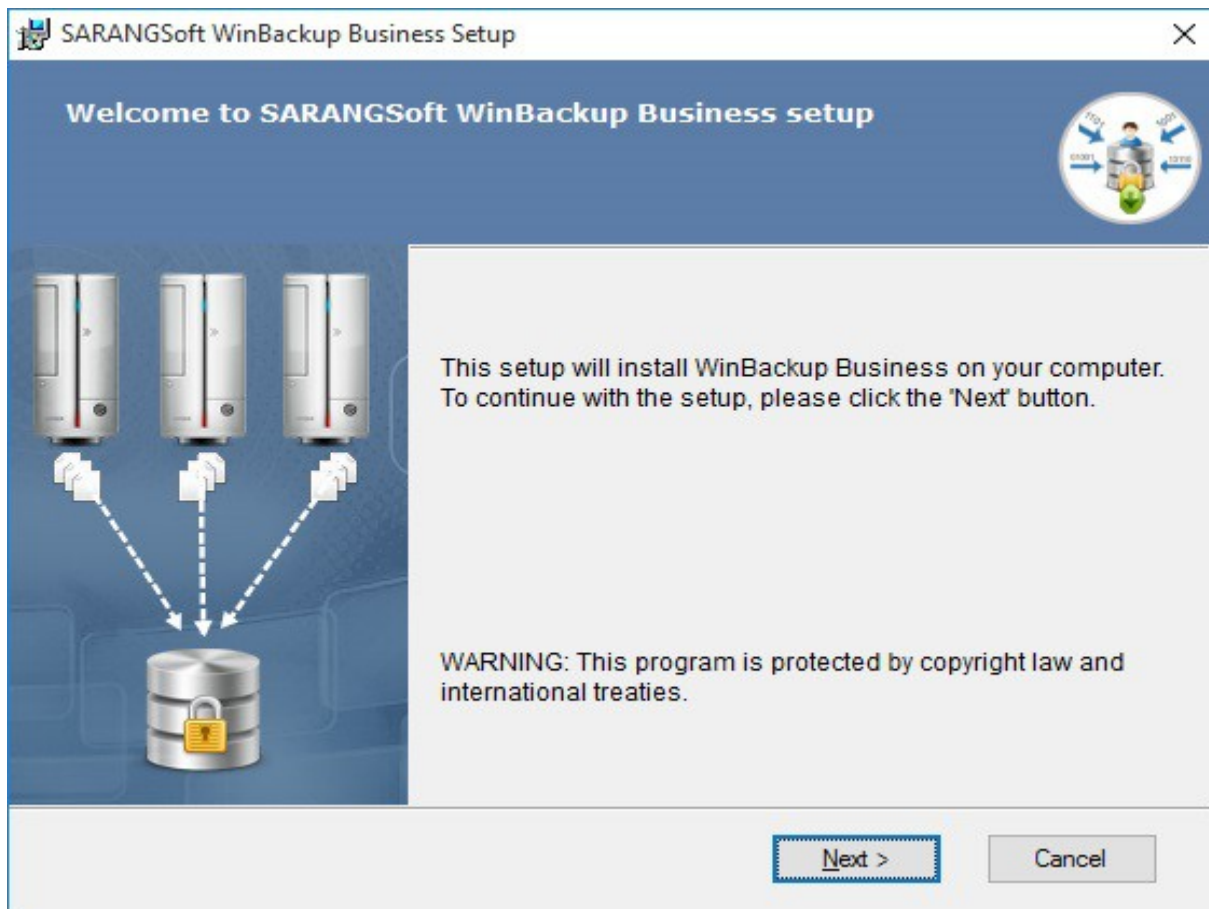


Figure 12: Starting dialog for installation of WinBackup Business.

### Step 2: "License Agreement" Dialog

The 'License Agreement' dialog shows the detailed description of the License Agreement for using WinBackup Business. Please read through this (see Figure 13). If you accept the terms and conditions, please click "I acept the terms in the license agreement" option, and then click 'Next'. Initially, the dialog appears with the 'Next' button inactive. It will be activated only after selecting the "I acept the terms..." option.

You can print a hard copy of the 'License Agreement' by clicking the 'Print' button. You can go back to the previous step by clicking on the 'Back' button, or may cancel the installation by clicking on 'Cancel'.

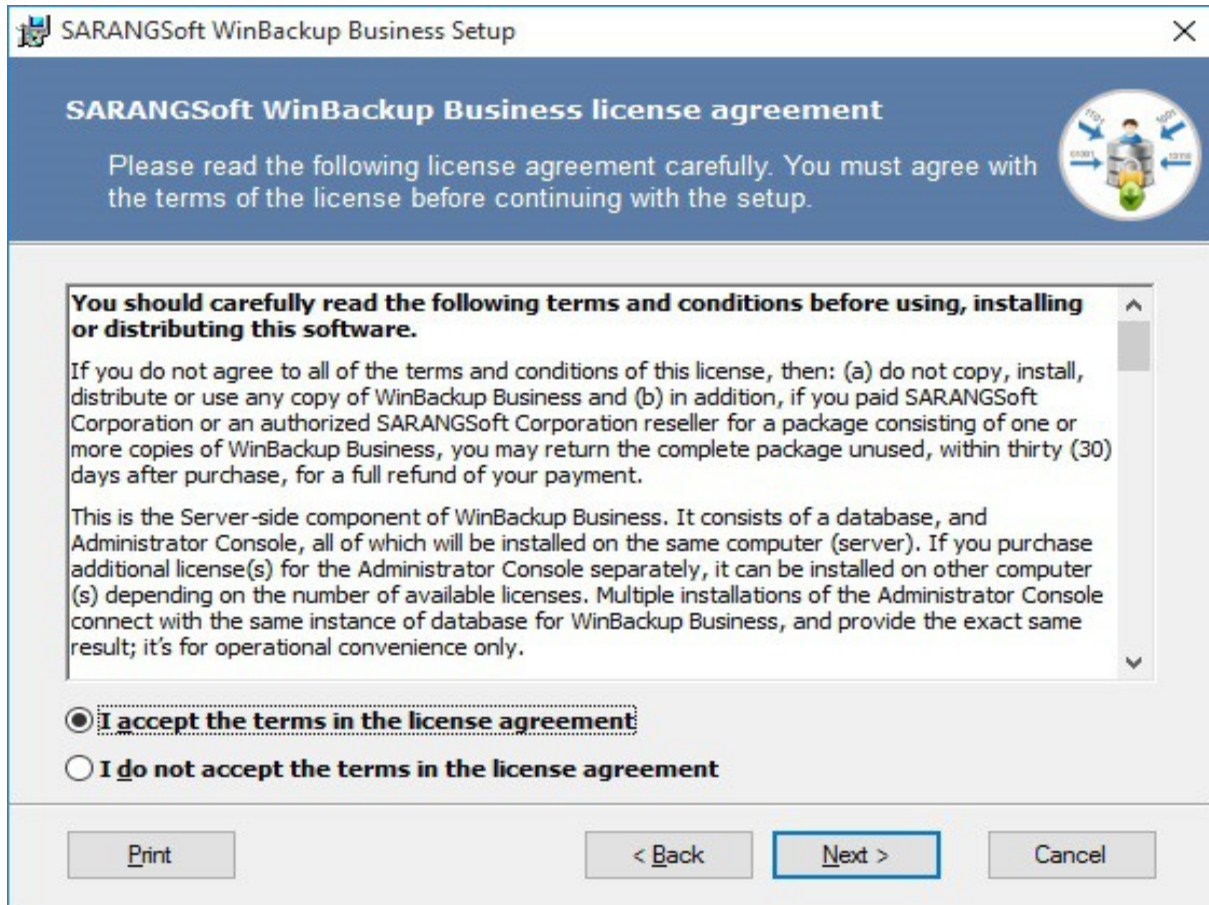


Figure 13: The 'License Agreement' dialog.

### Step 3: Customizing the Installation Path

In the next dialog, you can choose the installation path for the application. The dialog appears with a default path. Install it in any other location by clicking the 'Browse...' button. Click 'Next' to proceed to the next step.

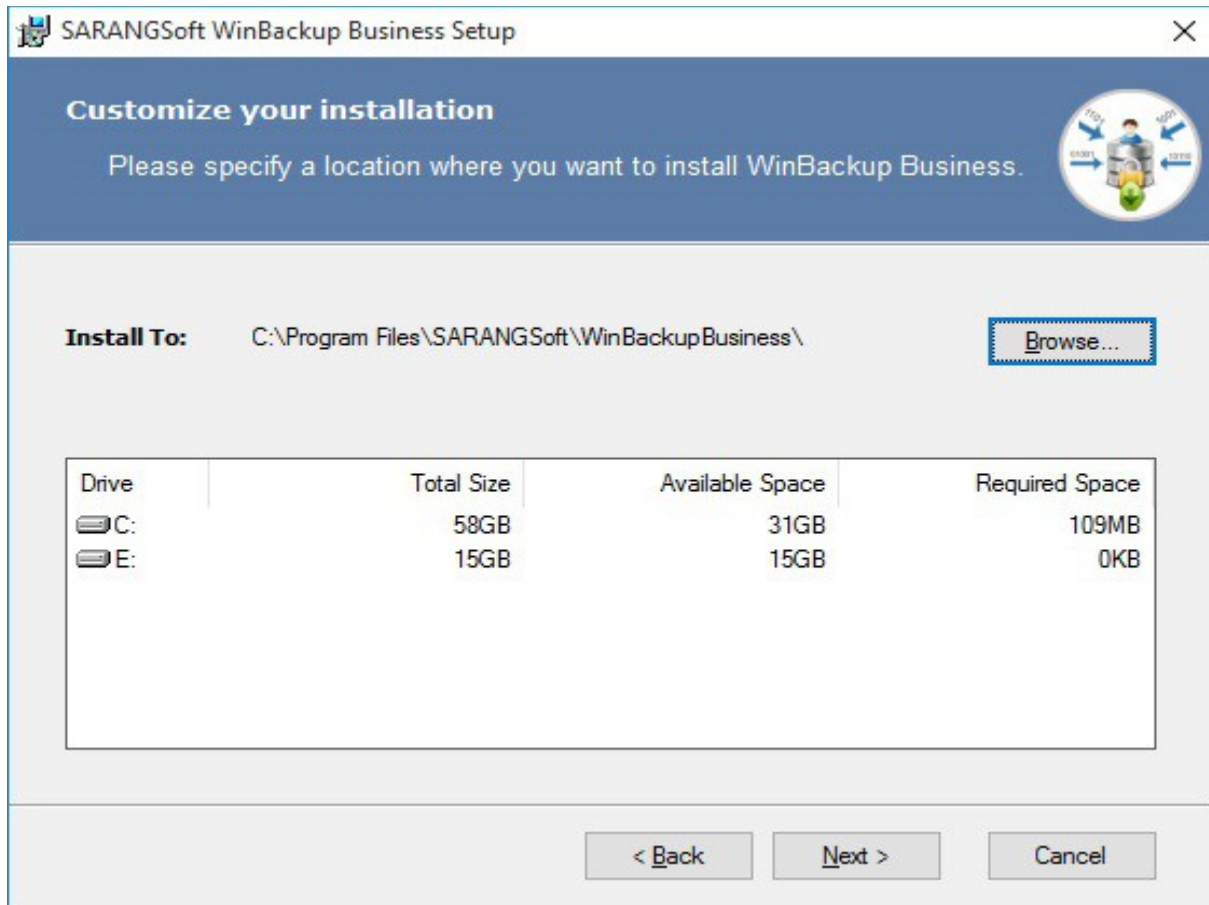


Figure 14: Choosing the path for installing WinBackup Business.

**Step 4: Selecting the component you need**

This dialog (Figure 15) appears with two radio button options. Select the 'Administrator Console' option. Choosing this option, will allow you to Install only the 'Administrator console' on your computer from which you will be able to configure and control the backup arrangements across your network.

**NOTE:** The system requirements for installing the 'Administrator Console' have been mentioned at the beginning in this document.



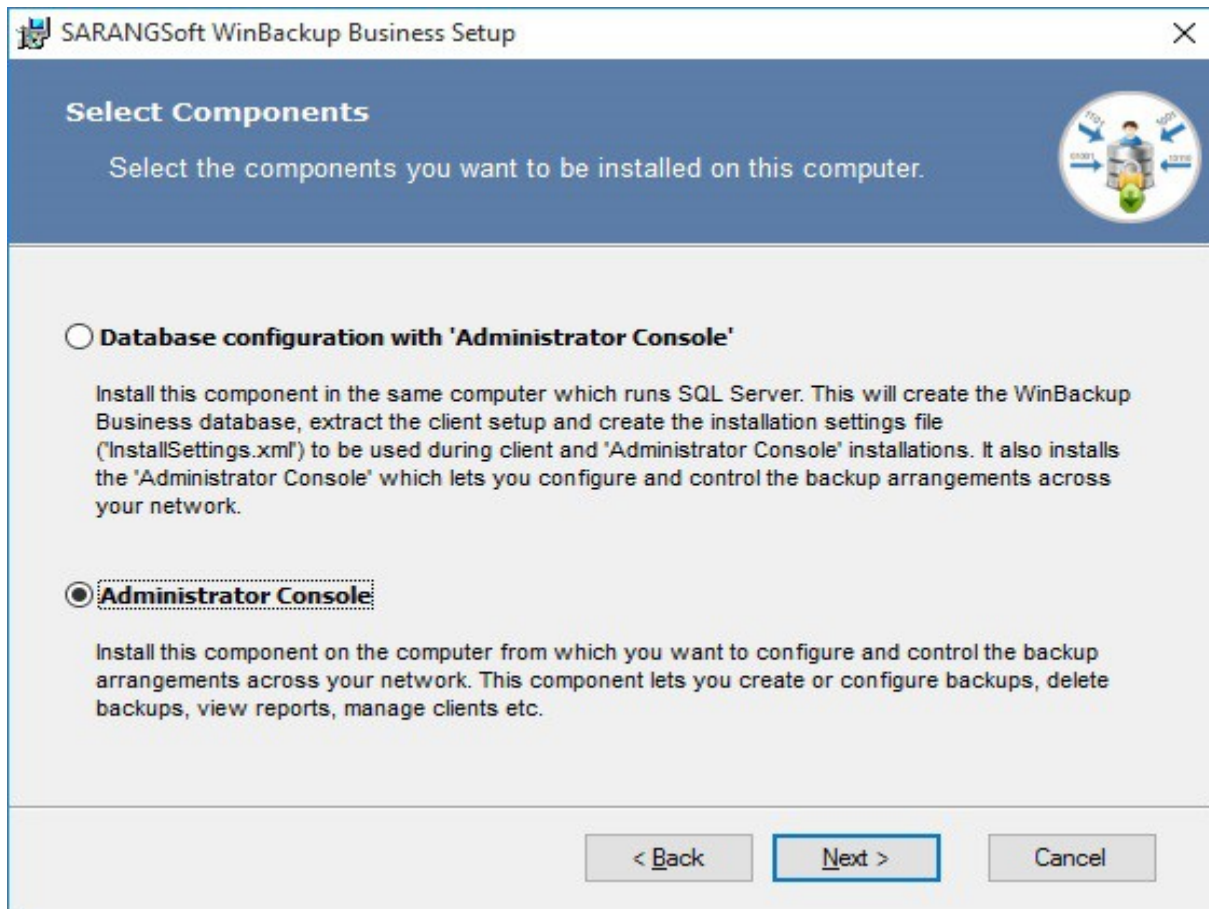


Figure 15: Select only the 'Administrator console' component to be installed.

### Step 5: Specify path for the 'Installation settings File'

In the next dialog (Figure 16), specify the path for the installation settings file (a file with .xml extension). This file was created during 'Database configuration' component setup and will be located in the same location as the client-setup file. The file will be present in a shared folder called 'WinBackupBusinessClient' in the computer where the 'Database Configuration with Administrator Console' is installed.

Click 'Install' to start the installation process.

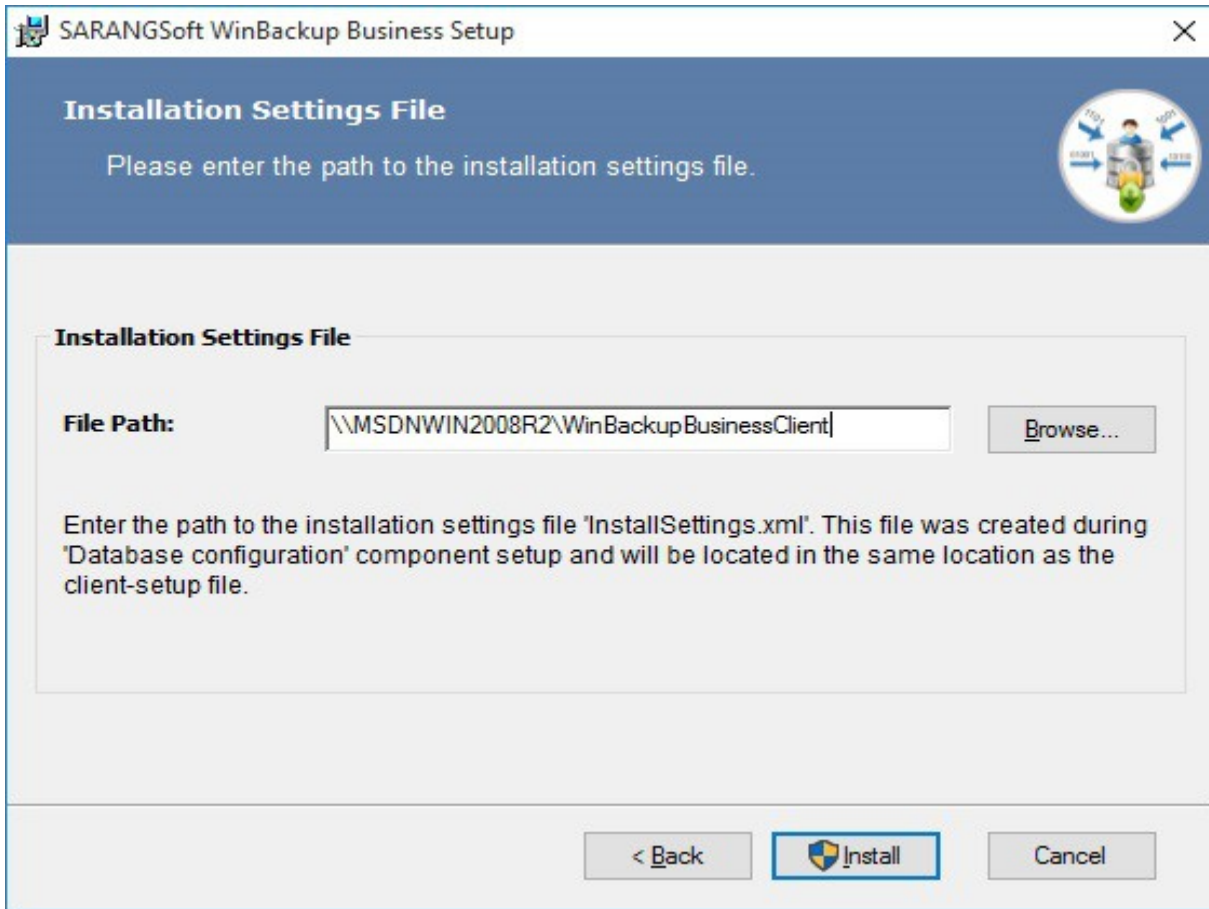


Figure 16: Specify the path for 'installation Settings File'

### Step 6: Installing WinBackup Business

In this step you see the progress of 'WinBackup Business' installation. You may cancel the process by clicking on the 'Cancel' button (see Figure 17).

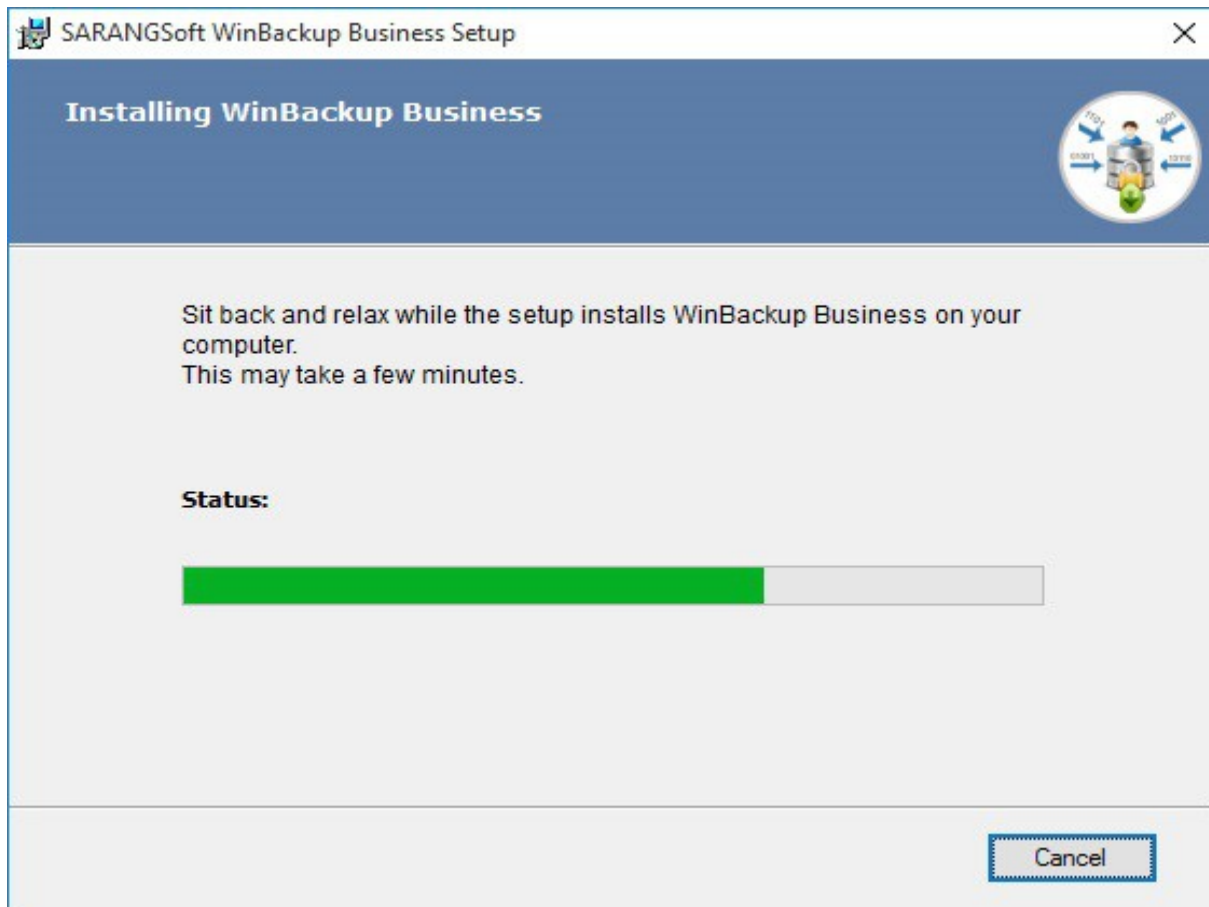


Figure 17: Progress of WinBackup Business installation.

**Step 7: 'WinBackup Business Successfully Installed' dialog**

The next dialog (Figure 18) that appears, informs that WinBackup Business has been installed on the computer successfully. Click 'Next' to proceed to the next step.

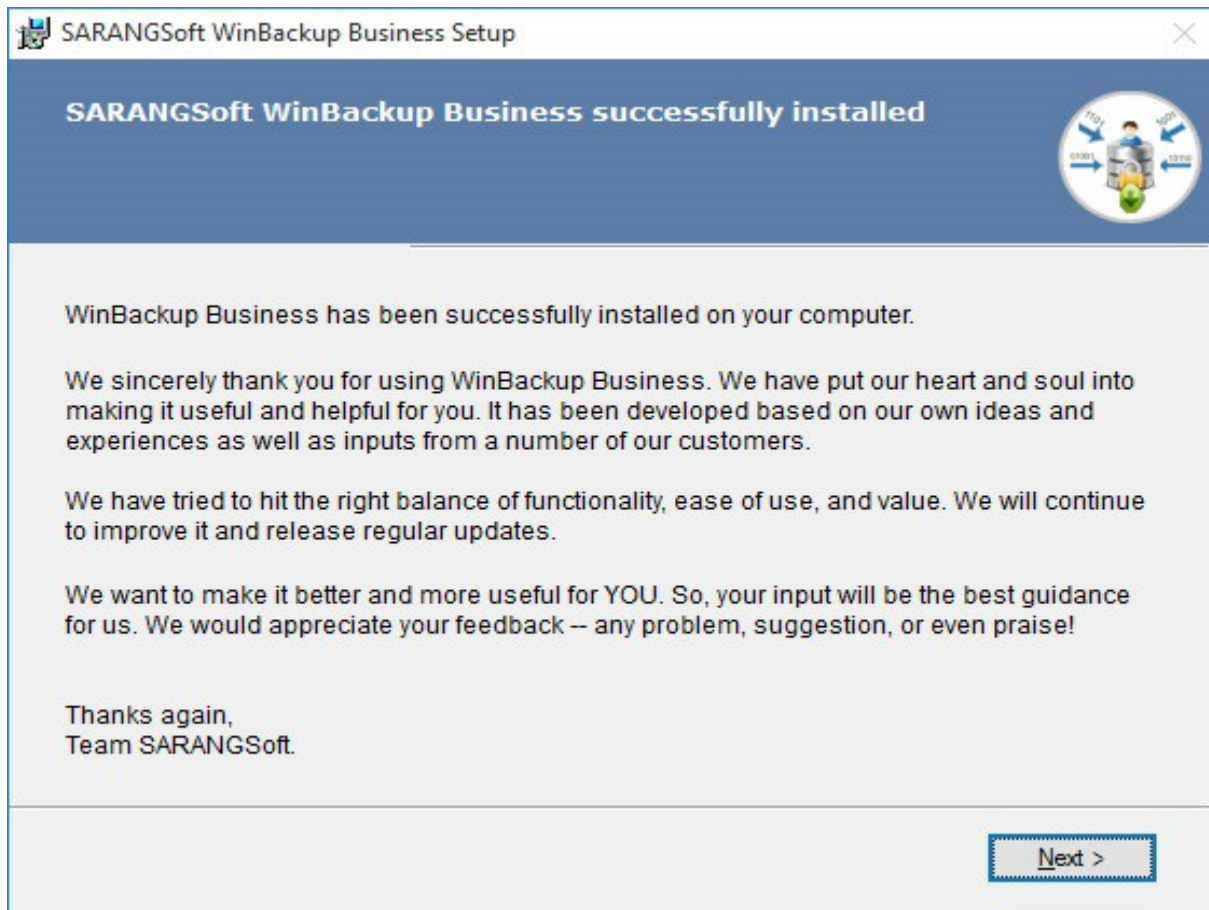


Figure 18: Dialog that informs that WinBackup Business has been installed successfully on the computer.

### Step 8: Finishing the Installation Process

This is the last step of WinBackup Business installation (see Figure 19). The dialog shows three (3) options, out of which you need to choose any one to finish the setup. The options are as follows:

- **Close setup:** Finishes setup process, closes the setup dialog but does not run the application.
- **Close setup and run WinBackup Business:** Finishes setup process, closes the setup dialog, as well as runs 'WinBackup Business Control Panel'.
- **Close setup and check product updates on the web:** Finishes setup, closes the setup dialog and launches an application which checks the SARANGSoft website ([www.sarangsoft.com](http://www.sarangsoft.com)) for any updates of the product.

Choose an option you need and click on 'Finish' button to finish the installation process.

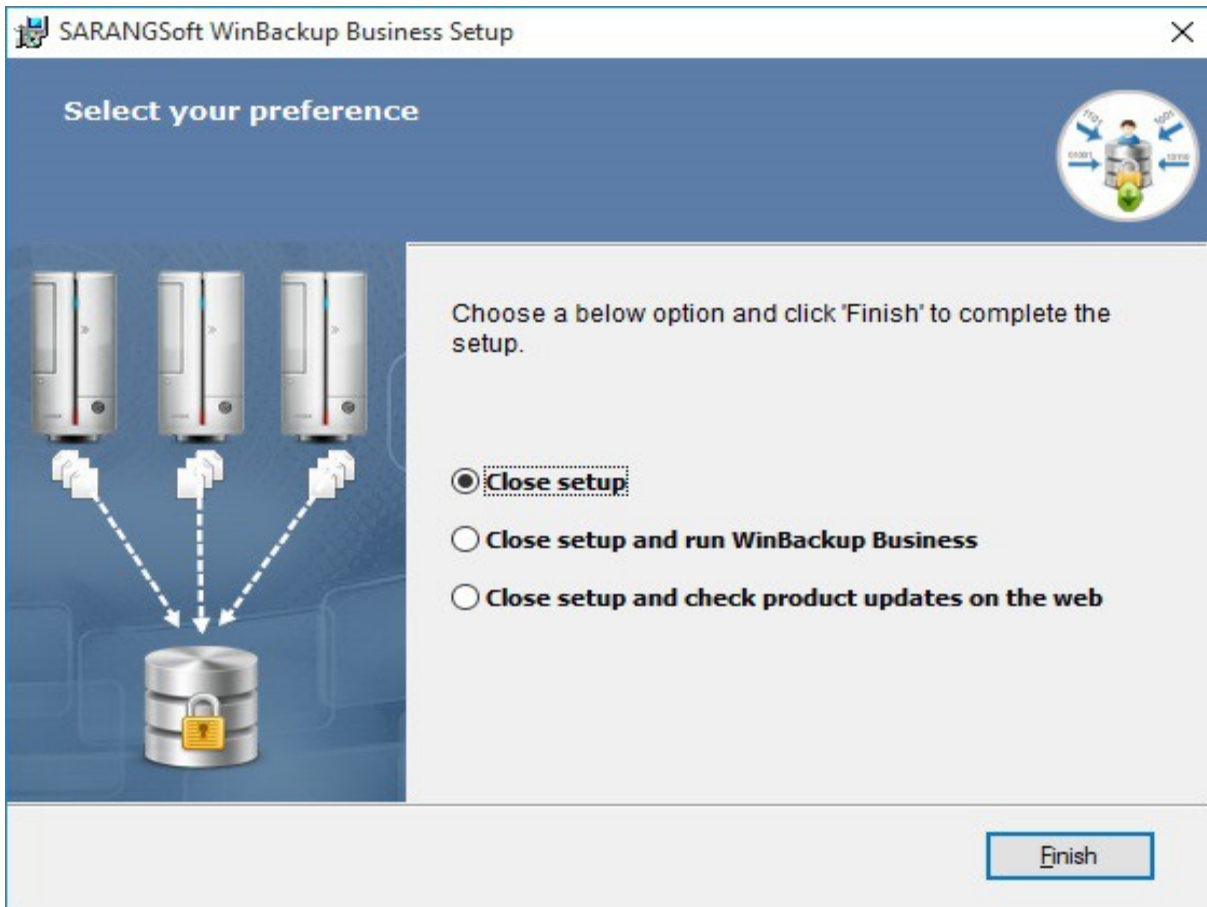


Figure 19: Finishing the installation process.